



SAGITECH ▶

Advantages of Sagitech VMS

**Intelligent video surveillance for
banking and financial organizations**

Sagitech VMS in numbers

Sagitech VMS combines proven development experience, customer trust, and real-world deployment across a wide range of projects.

A light gray world map is centered in the background of the infographic, showing the continents of North America, South America, Europe, Africa, Asia, and Australia.

14

Years of experience in video surveillance

700 000+

Connected video cameras

3 500+

Completed projects

1 000+

Regular trusted clients worldwide

18

Countries with Sagitech VMS Integration

About Sagitech Lab

We focus on high-performance and user-friendly software for IP surveillance systems. Our solution enables building scalable systems with any number of servers, IP cameras and workstations. We ensure high-quality fulfillment of all the processes necessary for successful design, development and implementation of the software product.

We provide:

- Reliable universal software created and tested for mass sales;
- More than 20 video analysis modules;
- An open platform with extensive integration capabilities via SDK and HTTP API;
- Support, regular updates and development of the software without additional costs and annual payments;
- Creation of custom functionality for customer needs.

Sagitech VMS Capabilities



Technology Highlights

- Supports 5,000+ camera models from 300 manufacturers;
- Integrates with fire/security systems, access control, cash counters, external mics, and more;
- SDK for third-party system integration.

User-Friendly

- Intuitive interface;
- Setup in just 7 minutes;
- Technical support, software updates and continuous development.

Cross-Platform Access

- Server and client applications for Windows and Linux;
- Mobile apps for iOS and Android;
- Web client compatible with all browsers.

Intellectual

- Neural network detectors;
- Intelligent video analytics;
- Open API.

Sagitech VMS in Banking and Financial Organizations



Business analytics



ATM security



Two-factor verification

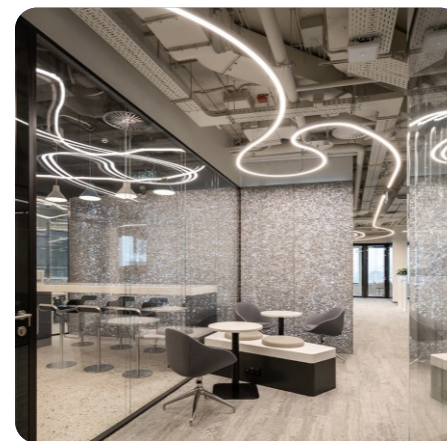
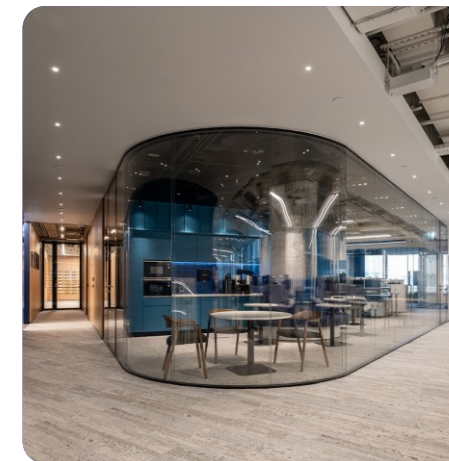


Access control

Applications

Business Analytics and Management

- Visitor traffic statistics.
- Queue management.
- Conversion rate assessment.
- Counting unique and repeat visitor groups.
- Customer behavior analysis and identification of the most visited areas.
- Monitoring staff activity and service quality.
- Notifications about VIP clients and violators.



Applications

Security and Monitoring

- Monitoring ATMs and bank branches to detect suspicious activity.
- Fraud prevention in cash-desk and depositary areas.
- Transaction process monitoring.
- Two-factor customer identification.
- Observation and analysis of staff behavior.
- Prevention of theft and fraud.



Analytics and Specialized Modules

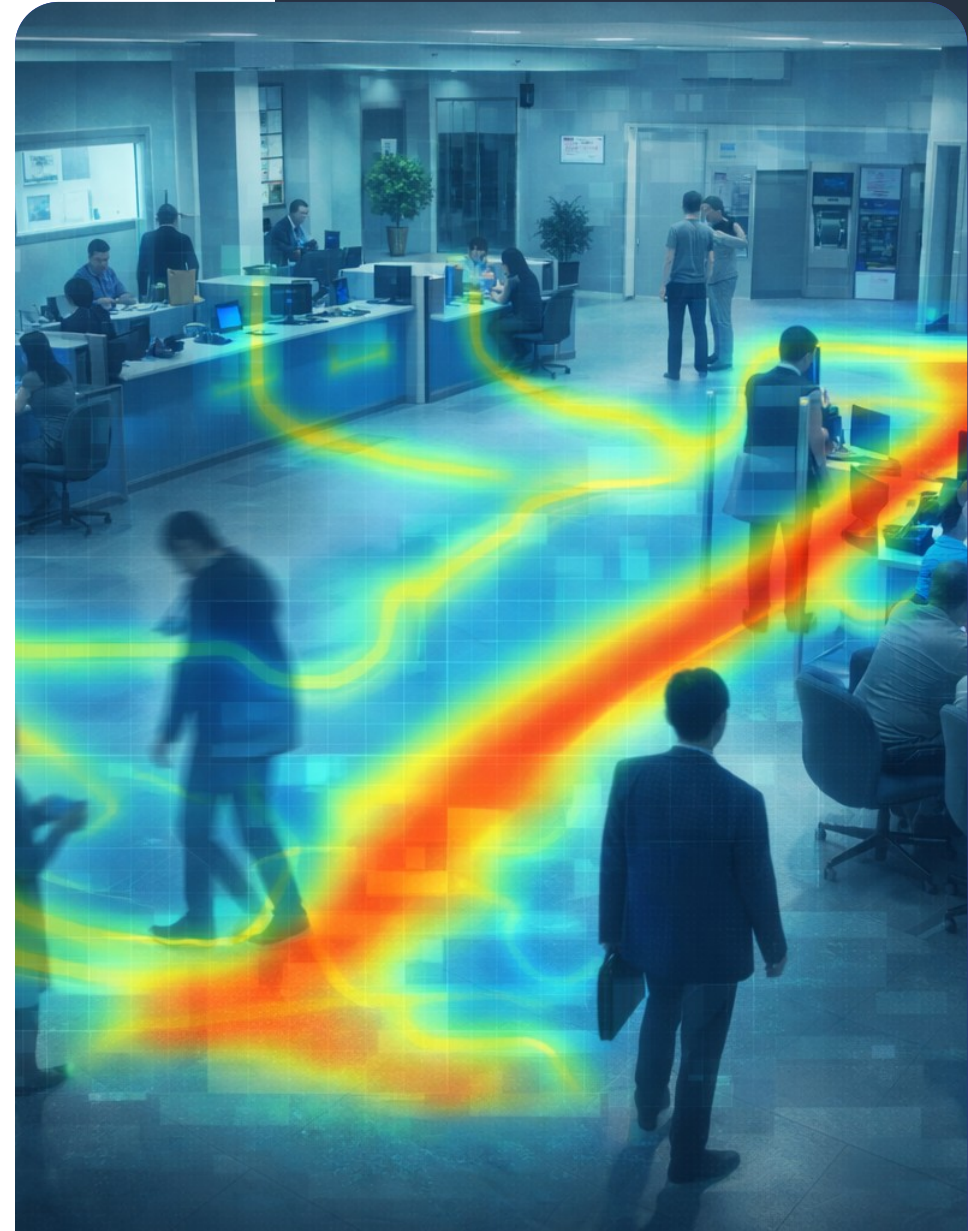
Heat Map

Capabilities

- Analysis of visitor behavior in a bank branch.
- Assessment of attendance intensity and popularity of different zones.

Benefits

- Evaluation of service area efficiency and placement of information and advertising stands.
- Optimization of operational hall layouts.



Analytics and Specialized Modules

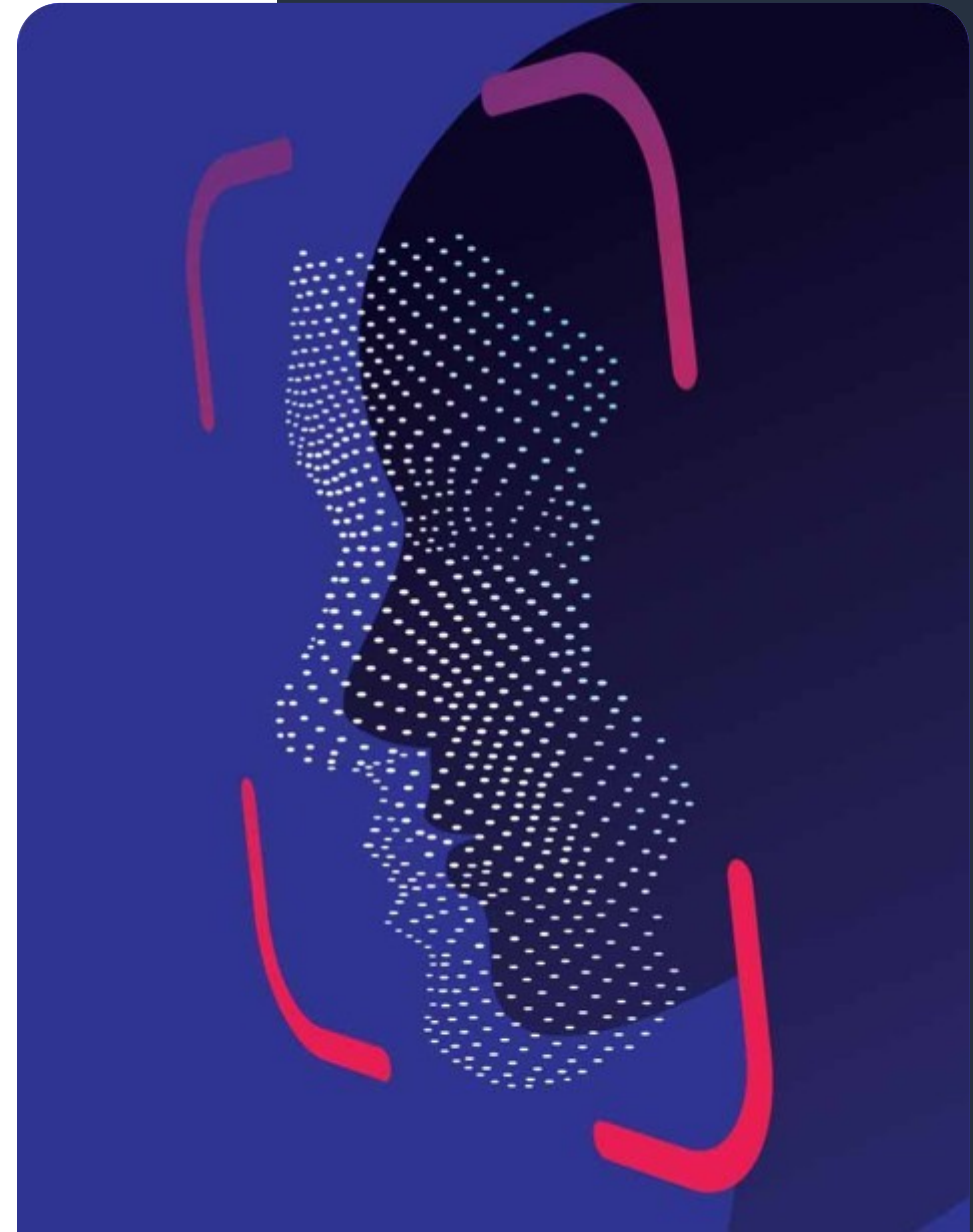
Face Recognition for Fraud Prevention

Capabilities

- Identification of suspicious individuals.
- Fraud prevention.
- Automatic access control to service areas.
- Integration with document readers.

Benefits

- Automation of access to service areas using biometric data.
- Creation of white and black lists to ensure security and prevent fraud.
- Two-stage customer identity verification: biometric and passport-based.



Analytics and Specialized Modules

Face Recognition and Analytics

Capabilities

- Unique visitor counting.
- Recognition of VIP clients.
- Demographic analysis of visitors.
- Real-time statistics display.

Benefits

- Improved service quality through prompt VIP identification and personalized offers.
- Measurement of branch visit conversion.
- Analytics and gender-age portrait of the target audience



Analytics and Specialized Modules

Queue Detector

Capabilities

- Counting people in queues.
- Tracking queue dynamics.

Benefits

- Reduced waiting time and improved quality of service.
- Higher customer loyalty.
- Optimization of staff schedules.



Analytics and Specialized Modules

Staff Presence Monitoring and Control

Capabilities

- Detection of objects of a specified type - people.
- Display of objects and alarm zones in live view.
- Generation of alarm events.
- Search for alarm events in the archive.
- Building staff activity reports for a specified zone.

Benefits

- Improved staff discipline through objective workplace presence control.
- Analytics on workspace utilization for schedule optimization and load balancing.



Analytics and Specialized Modules

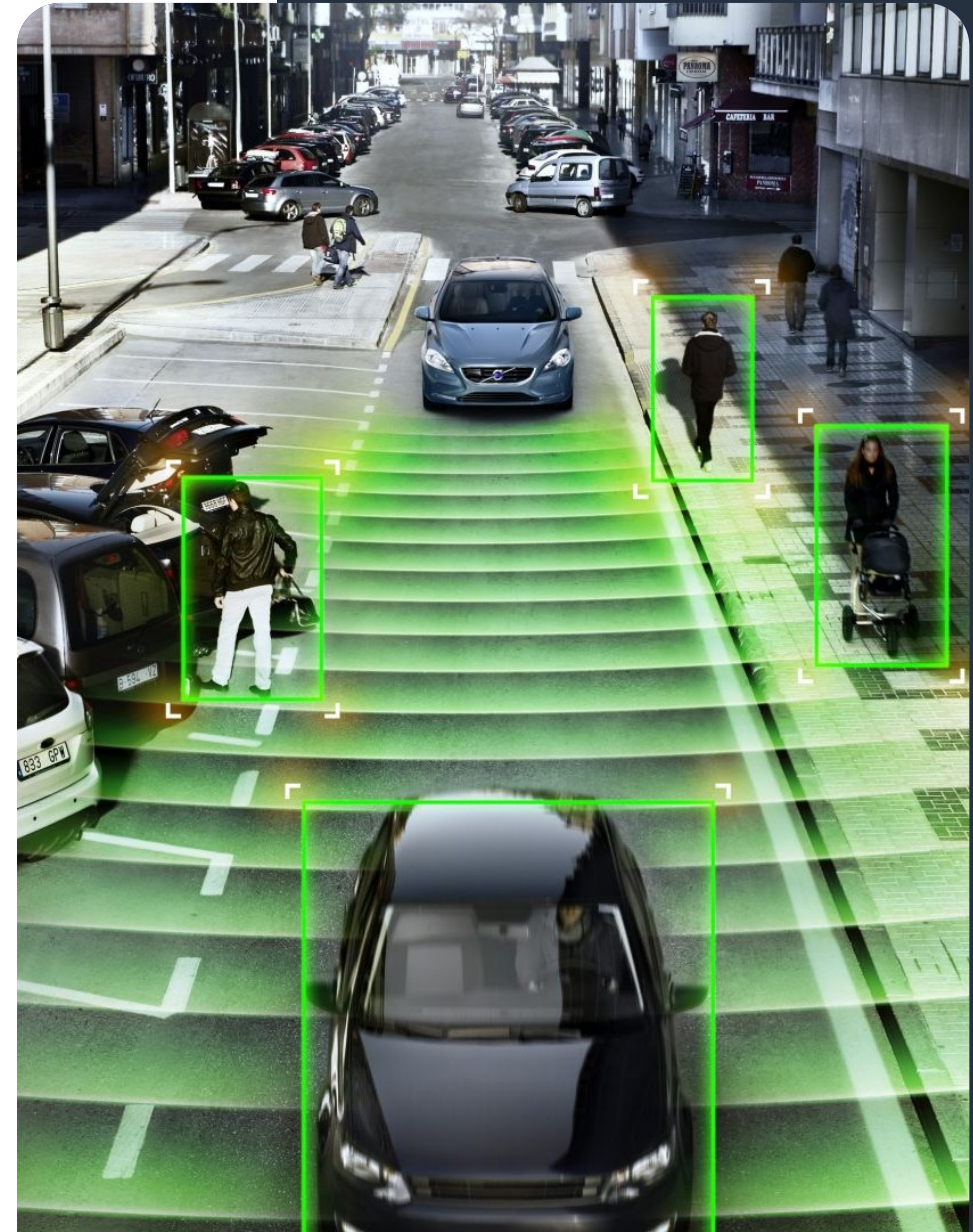
Neural Network Object Detector

Capabilities

- Detection and classification of objects: person, vehicle, or animal.
- Movement monitoring and theft prevention.
- Detection of people in dangerous zones and accident prevention.

Benefits

- Improved security efficiency through automatic real-time territory monitoring.



Analytics and Specialized Modules

Neural Network Visitor Counting

Capabilities

- Counting visitors at entry and exit using neural networks.
- Movement direction analysis.
- Traffic assessment.

Benefits

- Evaluation of staff efficiency and service level improvement.
- Adjustment of staffing schedules.
- Analysis of promotional campaigns.



Analytics and Specialized Modules

Neural Network Abandoned Object Detector

Capabilities

- Detection of stationary objects.
- Object-type identification: bag, package, or backpack.
- Analysis of how long an item remains in place.

Benefits

- Notification of security staff about potentially dangerous objects.
- Search for and return of lost items to clients.



Analytics and Specialized Modules

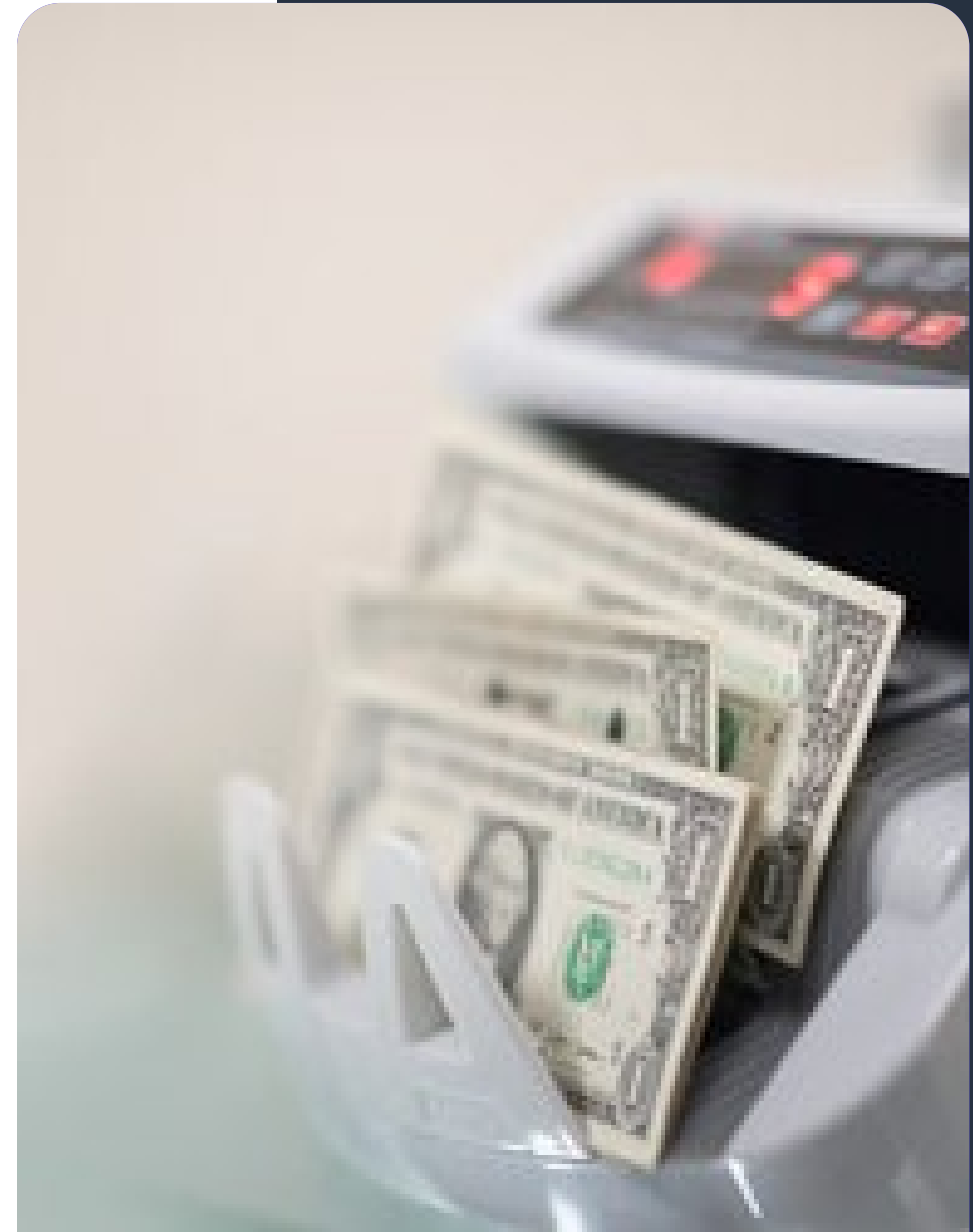
Integration with Cash Counters

Capabilities

- Display of transaction data over the video stream.
- Search and filtering of operations by specified parameters.
- Report generation and export.

Benefits

- Greater transparency of cash operations and lower fraud risks.
- Faster internal investigations and dispute resolution.
- Reduced staff workload through automation of operational control and accounting.



Useful features of the Enterprise Edition for the Banking Sector

Centralized management of a financial organization network. Unification of all branches into a single video surveillance system. The Enterprise edition makes it possible to install a video server in each branch and combine them into a single domain for centralized control and administration.

Centralized Control and Administration

- Management of an unlimited number of video servers within a single system;
- Flexible user role assignment for the entire domain;
- Access control policies, updates, proxying, and logging.

Automatic Equipment Addition

- Fast connection of new recorders to the system - manually or automatically.

Flexible Access Control

- Role-based access control for viewing, archiving, recording, configuration, and other operations;
- Tree-structured object permissions with inheritance: users only see authorized cameras;
- Centralized configuration of the entire domain;
- Brute-force password protection for stronger security.

Notifications and Integration

- Event notifications via Telegram and Email;
- Automatic alerts in case of failures or critical events.

Easy Setup & Updates

- Bulk software/configuration updates across servers;
- Configuration of servers and cameras from client software (no web UI needed).

Status Monitoring and Control

- Centralized monitoring of the network, disks, cameras, archives and databases;
- Flexible reporting on equipment status and user activity with filtration by time, objects and users.

Offline Operation

- Temporary disconnection from the central server does not affect critical operative functions of local servers.

SAGITECH >>



sales@sagitechlab.com
support@sagitechlab.com

www.sagitechlab.com