



SAGITECH 

Advantages of Sagitech VMS Smart Video Surveillance for City Projects

Sagitech VMS in numbers

Sagitech VMS combines proven development experience, customer trust, and real-world deployment across a wide range of projects.

A light gray world map is centered in the background of the infographic, showing the continents of North America, South America, Europe, Africa, Asia, and Australia.

14

Years of experience in video surveillance

700 000+

Connected video cameras

3 500+

Completed projects

1 000+

Regular trusted clients worldwide

18

Countries with Sagitech VMS Integration

About Sagitech Lab

We focus on high-performance and user-friendly software for IP surveillance systems. Our solution enables building scalable systems with any number of servers, IP cameras and workstations. We ensure high-quality fulfillment of all the processes necessary for successful design, development and implementation of the software product.

We provide:

- Reliable universal software created and tested for mass sales;
- More than 20 video analysis modules;
- An open platform with extensive integration capabilities via SDK and HTTP API;
- Support, regular updates and development of the software without additional costs and annual payments;
- Creation of custom functionality for customer needs.

Sagitech VMS Capabilities



Technology Highlights

- Supports 5,000+ camera models from 300 manufacturers;
- Integrates with fire/security systems, access control, cash counters, external mics, and more;
- SDK for third-party system integration.

User-Friendly

- Intuitive interface;
- Setup in just 7 minutes;
- Technical support, software updates and continuous development.

Cross-Platform Access

- Server and client applications for Windows and Linux;
- Mobile apps for iOS and Android;
- Web client compatible with all browsers.

Intellectual

- Neural network detectors;
- Intelligent video analytics;
- Open API.

Smart Video Surveillance for City Projects



Urban parking and transport

Safety of public spaces

Urban environment and zone analytics

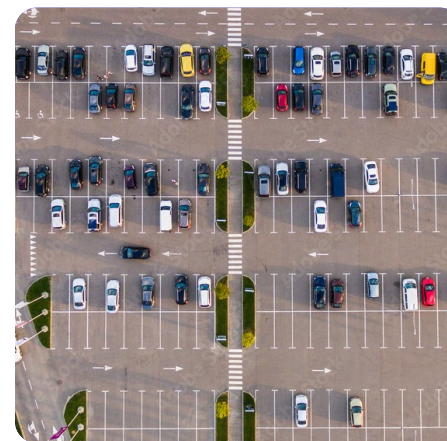
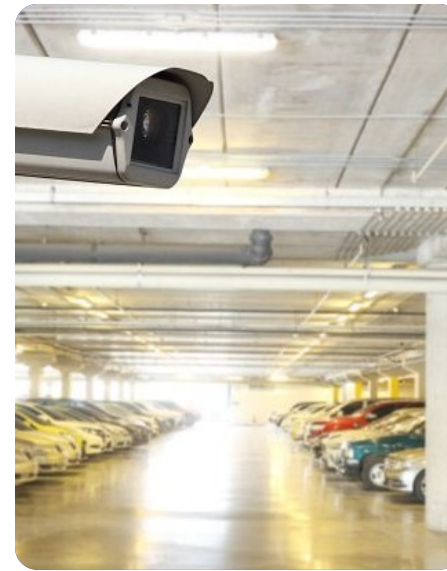
Integration with digital twin and smart city platforms

Unified citywide video surveillance system

Applications

Urban Parking and Transport

- Centralized monitoring of parking areas, entry and exit points, and adjacent traffic zones;
- Vehicle counting from video streams and parking occupancy monitoring;
- Recognition of vehicle license plates at entry and exit points;
- Search for vehicle events in the archive by plate number, time, and zone;
- Transmission of parking occupancy data and vehicle event data to external systems;
- Ability to combine the license plate recognition module with vehicle detection to improve counting accuracy.



Applications

Safety of Public Spaces

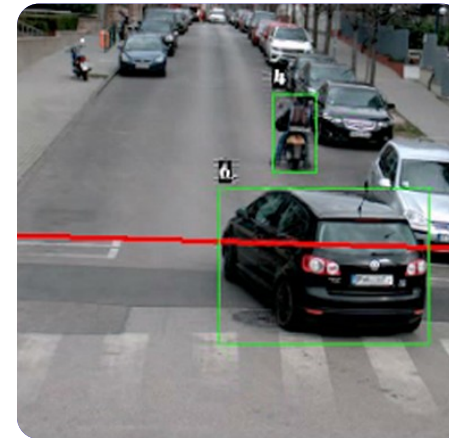
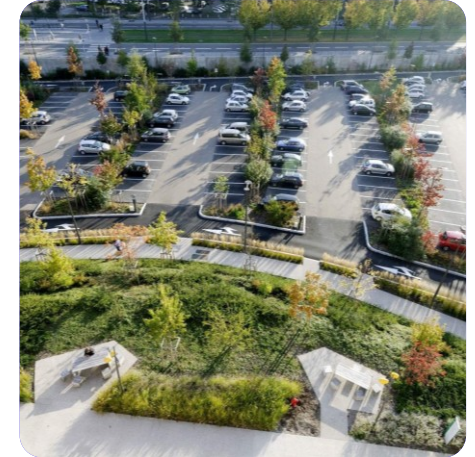
- Detection of incidents and alarm events in public areas;
- Detection of abandoned objects in high-attention zones;
- Monitoring of pedestrian and vehicle movement in dangerous or restricted areas;
- Early detection of fire and smoke in open areas and municipal facilities;
- Fast search for alarm episodes in the archive and preservation of video evidence



Applications

Urban Environment and Zone Analytics

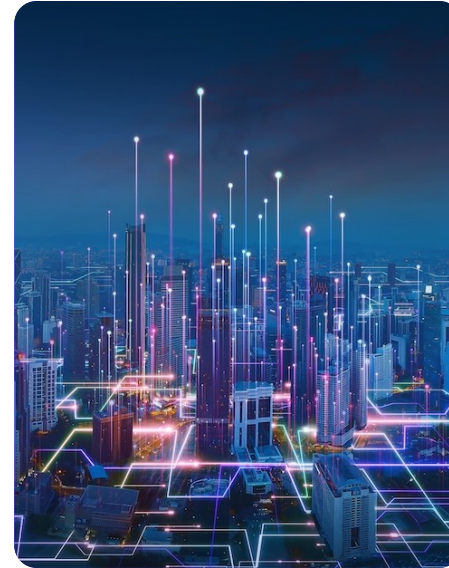
- Counting and analysis of pedestrian and vehicle flows in public areas;
- Activity heat maps for squares, bus stops, parks, embankments, and entrance groups;
- Identification of popular and low-traffic zones;
- Statistics by time of day, day of the week, and seasonal periods;
- Data for urban improvement, navigation, event planning, and city infrastructure development.



Applications

Integration with Digital Twin and Smart City Platforms

- Transmission of video analytics events, alarms, and statistics to external digital platforms;
- Integration via API and SDK with municipal information systems, BI, and digital twin solutions;
- Use of the video surveillance system as a data layer for smart city platforms and digital monitoring dashboards;
- Consolidation of video, analytics, and third-party system data within a single environment.



Applications

Unified Citywide Video Surveillance System

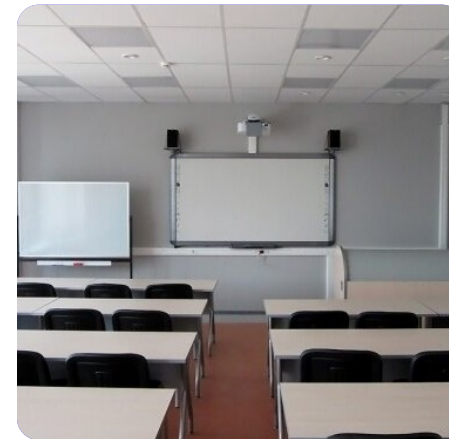
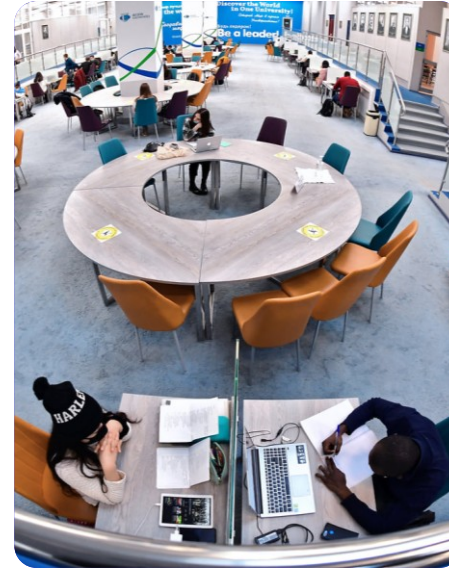
- Management of a large number of video servers and cameras within a single system;
- Consolidation of geographically distributed facilities into a common environment;
- Access rights management by roles, locations, and facilities;
- Centralized monitoring of cameras, servers, archives, and databases;
- Notifications about failures, critical events, and equipment issues.



Applications

Advantages of Sagitech VMS for Municipal Projects

- The platform is suitable for pilot and scalable city projects;
- Support for cameras from different manufacturers and existing NVRs/video servers;
- Possibility of phased expansion without a complete infrastructure replacement;
- Customization of functionality for the project and integration with third-party systems;
- No mandatory annual fees for updates and technical support.



Urban Parking and Transport: License Plate Recognition Module

Capabilities

- Recognition of vehicle license plates at entrances and exits.
- Recording of vehicle entry and exit times.
- Archive search for transport events by plate number, time, and zone.
- Control of barriers and gates using recognized license plates.
- Detection of unauthorized or unidentified vehicles.
- Data transfer to external systems.

Benefits

- Automation of entry and exit to municipal parking areas and service zones.
- More accurate accounting of transport events.
- Reduced workload for operators and control staff.
- Fast search for the required vehicle in the archive.
- Integration with barriers, gates, parking systems, and city systems.



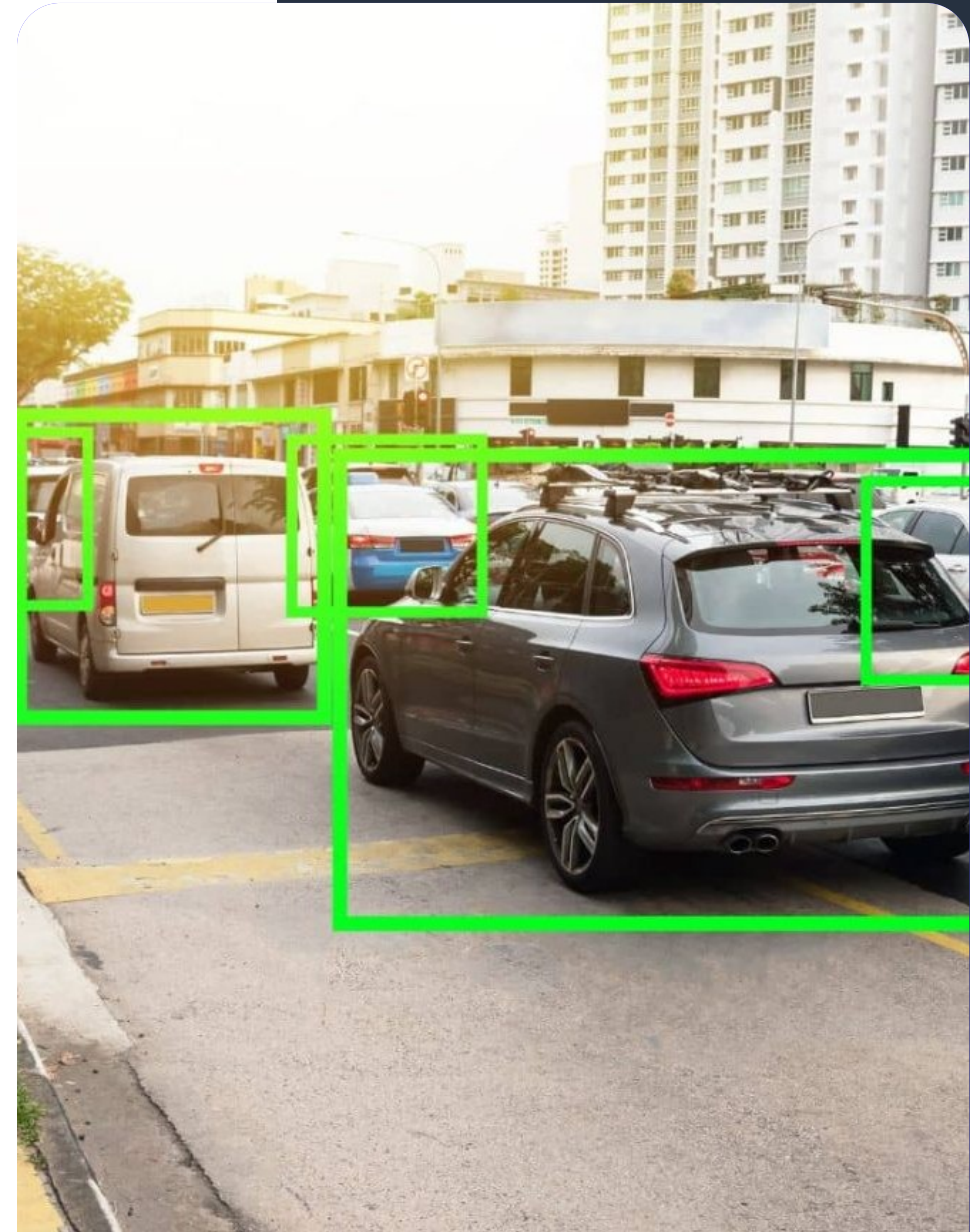
Special Parking Scenario: Neural Network Vehicle Detector and Car Counting

Capabilities

- Detection of vehicles in the observation area.
- Vehicle counting in a parking area from the video stream.
- Parking occupancy control.
- Detection of anomalies such as long-term parking, stopping in restricted zones, and zone overload.
- Generation of statistics by hour, day, and season.
- Can be used as a standalone module or together with LPR.

Benefits

- More accurate control of the actual number of vehicles in the parking area.
- Reduced accumulation of counting errors.
- Foundation for analyzing parking occupancy and traffic flows.
- Fast launch of pilot projects in problematic parking areas.
- Improved counting reliability when used together with LPR.



Urban Parking and Transport: Combined LPR + Vehicle Detection Scenario

Capabilities

- LPR records vehicle entry and exit.
- The vehicle detector confirms the actual presence of a vehicle in the zone.
- The system cross-checks both sources and reduces the risk of accumulated counting errors.
- When data differs, the system can generate a counter anomaly alert.
- Parking occupancy data can be transferred to external municipal systems.

Benefits

- More stable counting compared with a single-scenario approach.
- Higher accuracy in complex parking areas and street zones.
- A convenient pilot case for a city project.
- A basis for a digital model of parking areas and traffic load.



Public Spaces: Neural Network Abandoned Object Detector

Capabilities

- Detection of stationary objects in the frame.
- Object type identification: bag, package, backpack, and other items.
- Analysis of how long an object remains in the zone.
- Generation of an alarm event when the configured time threshold is exceeded.
- Archive search for alarm episodes.

Benefits

- Improved safety in public spaces and municipal facilities.
- Automatic monitoring of potentially dangerous situations.
- Reduced operator workload.
- Suitable for squares, stops, buildings, and entrance areas.
- Preservation of video evidence of incidents.



Municipal Facilities and Urban Infrastructure: Neural Network Fire and Smoke Detector

Capabilities

- Early-stage detection of open flame and smoke.
- Monitoring of parking areas, waste container sites, warehouses, and municipal facilities.
- Real-time alarm generation.
- Transfer of the event to an operator or an external system.
- Preservation of video fragments of the incident.

Benefits

- Earlier detection of fire hazards.
- Reduced response time to incidents.
- Improved safety for people and urban infrastructure.
- Suitable for both outdoor and indoor use.
- Foundation for integration with dispatching and alarm systems.



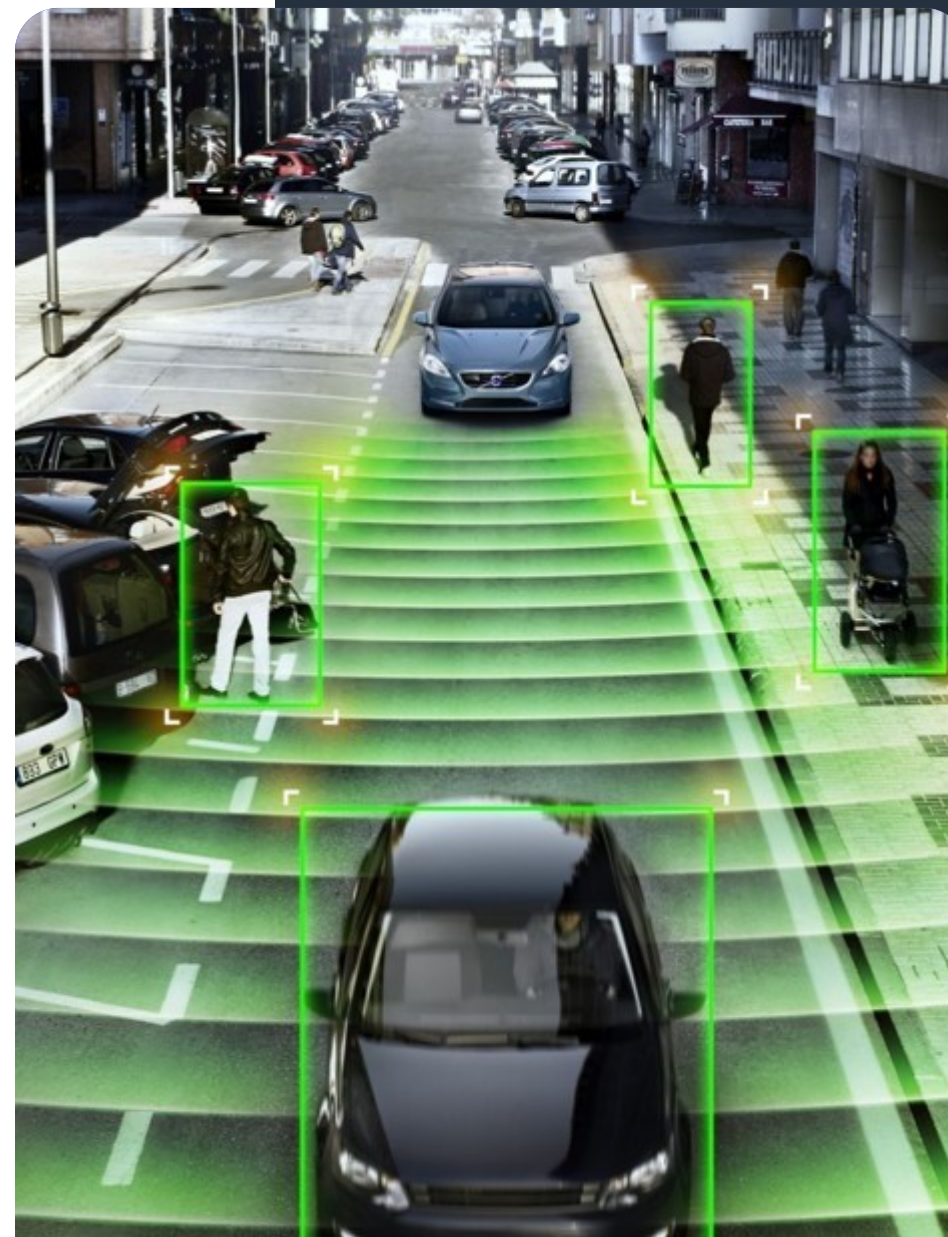
Safe City: Neural Network Object Detector

Capabilities

- Detection and classification of objects: person, vehicle, animal.
- Movement control in predefined zones.
- Detection of intrusion into restricted or dangerous areas.
- Generation of alarm events.
- Archive search by specified event attributes.

Benefits

- A universal module for Safe City tasks.
- Suitable for parking areas, perimeters, service zones, and public spaces.
- Enables fast launch of pilot projects without complex setup.
- Reduces operator workload.
- Can serve as a basic module for different urban analytics scenarios.



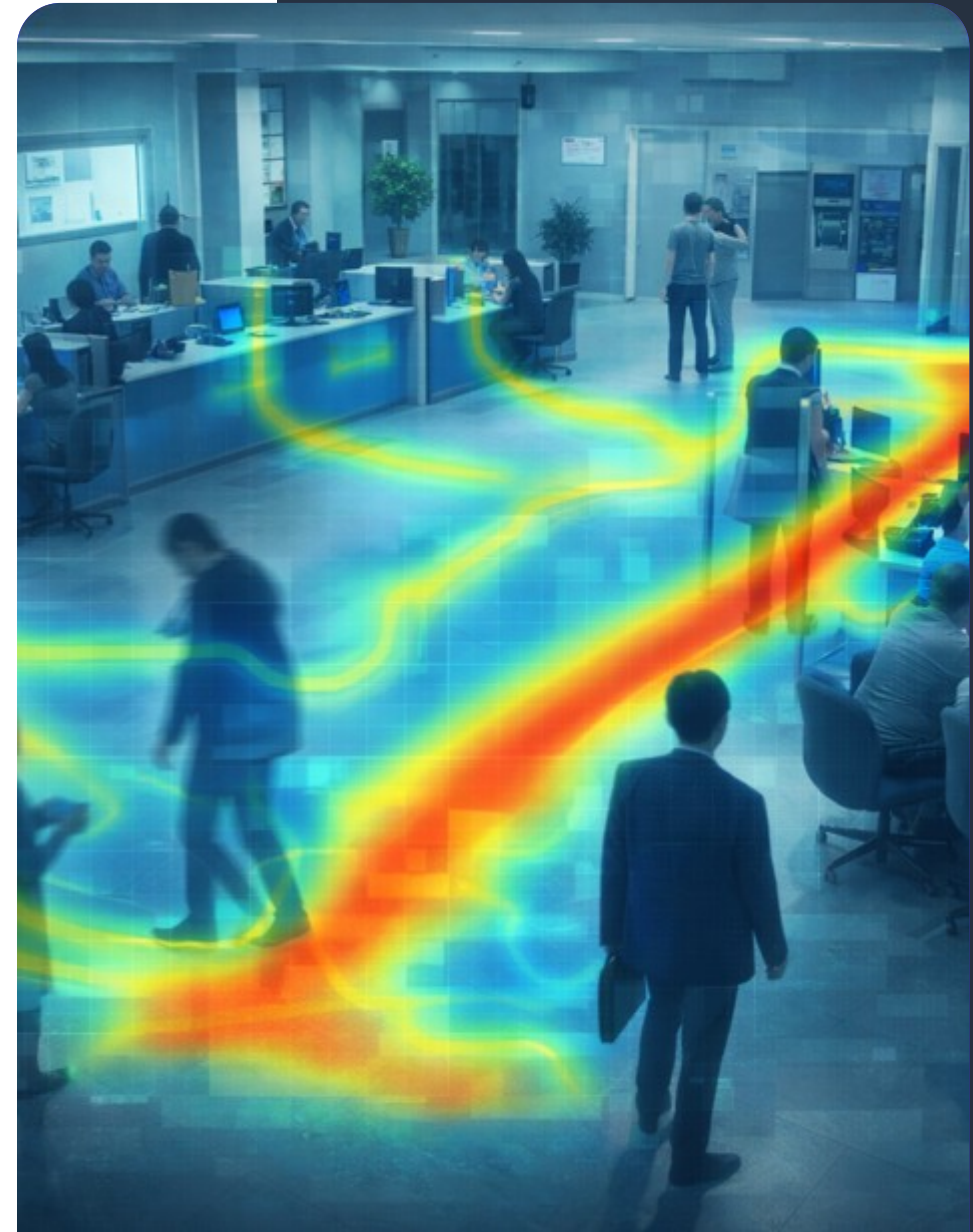
Urban Environment: Heat Map and Zone Analytics

Capabilities

- Analysis of pedestrian and vehicle movement intensity.
- Identification of popular and underutilized zones.
- Statistics on the use of public spaces.
- Load analysis by time of day, day of week, and season.
- Generation of a clear activity heat map.

Benefits

- Supports decision-making for urban improvement and city environment planning.
- Helps evaluate the load of squares, stops, entrance groups, parks, and promenades.
- Provides objective data for planning changes.
- Suitable for assessing the impact of events and urban infrastructure.
- Can transfer data to BI, smart city, and digital twin platforms.



Restricted Municipal Facilities: Face Recognition

Capabilities

- Identification of employees and visitors using a face database.
- Access control for service and restricted areas.
- Creation of allowed and restricted lists.
- Search for events using the face database.
- Integration with access control systems.

Benefits

- Automation of access to service areas.
- Reduced workload on security posts.
- Improved safety in restricted facilities.
- Convenience for sites with a large staff flow.
- Integration with ACS and event logs.



Useful Enterprise Edition Features for Municipal and Public Facilities

Centralized management of municipal facilities and consolidation of all sites into one unified video surveillance system. The Enterprise edition makes it possible to install a video server at each municipal facility and combine them into a single domain for centralized control and management.

Centralized Control and Administration

- Management of an unlimited number of video servers within a single system;
- Flexible user role assignment for the entire domain;
- Access control policies, updates, proxying, and logging.

Automatic Equipment Addition

- Fast connection of new recorders to the system - manually or automatically.

Flexible Access Control

- Role-based access control for viewing, archiving, recording, configuration, and other operations;
- Tree-structured object permissions with inheritance: users only see authorized cameras;
- Centralized configuration of the entire domain;
- Brute-force password protection for stronger security.

Notifications and Integration

- Event notifications via Telegram and Email;
- Automatic alerts in case of failures or critical events.

Easy Setup & Updates

- Bulk software/configuration updates across servers;
- Configuration of servers and cameras from client software (no web UI needed).

Status Monitoring and Control

- Centralized monitoring of the network, disks, cameras, archives and databases;
- Flexible reporting on equipment status and user activity with filtration by time, objects and users.

Offline Operation

- Temporary disconnection from the central server does not affect critical operative functions of local servers.

SAGITECH >>



sales@sagitechlab.com
support@sagitechlab.com

www.sagitechlab.com