



SAGITECH ▶

Advantages of Sagitech VMS

Intelligent Video Surveillance for Hospitals and Healthcare

Sagitech VMS in numbers

Sagitech VMS combines proven development experience, customer trust, and real-world deployment across a wide range of projects.

A light gray world map is centered in the background of the infographic, showing the continents of North America, South America, Europe, Africa, Asia, and Australia.

14

Years of experience in video surveillance

700 000+

Connected video cameras

3 500+

Completed projects

1 000+

Regular trusted clients worldwide

18

Countries with Sagitech VMS Integration

About Sagitech Lab

We focus on high-performance and user-friendly software for IP surveillance systems. Our solution enables building scalable systems with any number of servers, IP cameras and workstations. We ensure high-quality fulfillment of all the processes necessary for successful design, development and implementation of the software product.

We provide:

- Reliable universal software created and tested for mass sales;
- More than 20 video analysis modules;
- An open platform with extensive integration capabilities via SDK and HTTP API;
- Support, regular updates and development of the software without additional costs and annual payments;
- Creation of custom functionality for customer needs.

Sagitech VMS Capabilities



Technology Highlights

- Supports 5,000+ camera models from 300 manufacturers;
- Integrates with fire/security systems, access control, cash counters, external mics, and more;
- SDK for third-party system integration.

User-Friendly

- Intuitive interface;
- Setup in just 7 minutes;
- Technical support, software updates and continuous development.

Cross-Platform Access

- Server and client applications for Windows and Linux;
- Mobile apps for iOS and Android;
- Web client compatible with all browsers.

Intellectual

- Neural network detectors;
- Intelligent video analytics;
- Open API.

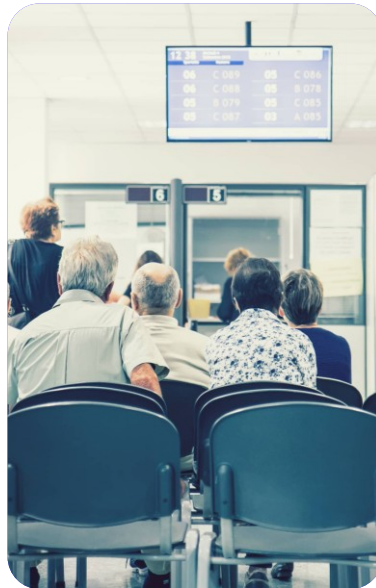
Intelligent Video Surveillance for Hospitals and Healthcare



**Safety of patients, staff,
and visitors**



**Access control for staff-
only and restricted areas**



**Visitor flow and queue
management**



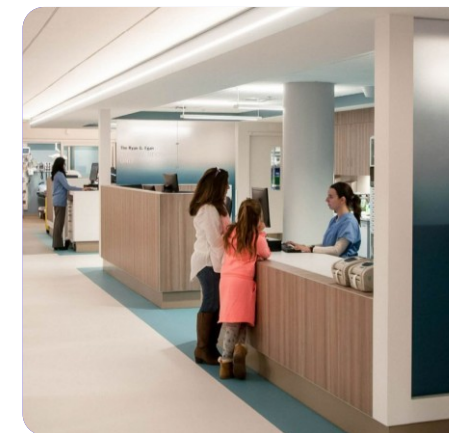
**Control of pharmacy
storage, medication
storage, and dispensing**



**Centralized and remote
monitoring**

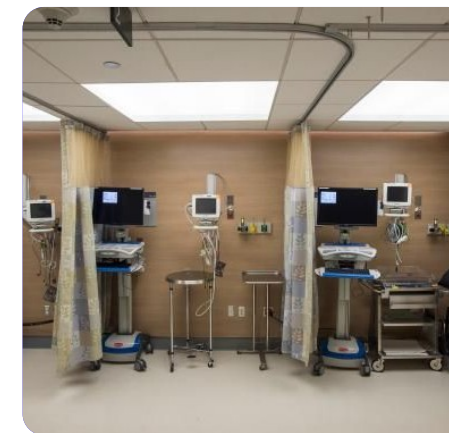
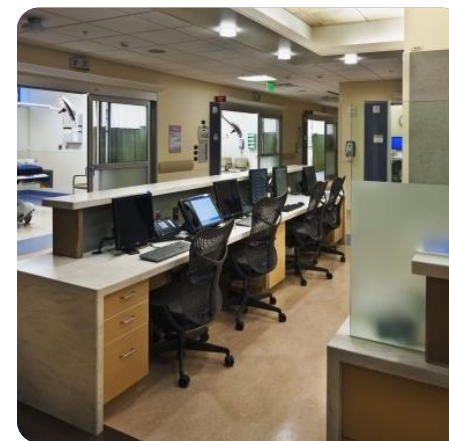
Safety of Patients, Staff, and Visitors

- 24/7 video monitoring of entrance groups, lobbies, corridors, admission departments, stairwells, and common areas.
- Detection of conflict situations, violations of public order, and abnormal events.
- Monitoring of visits to wards, treatment rooms, and diagnostic areas according to approved access scenarios.
- Fast search for events in the archive by time, camera, zone, or alarm.
- Improved safety and reduced reputational risks.



Access Control for Staff-Only and Restricted Areas

- Access control for operating rooms, laboratories, server rooms, pharmacy storage facilities, archives, and technical rooms.
- Face recognition of staff and visitors at entry points.
- Two-factor verification and integration with access control systems.
- Detection of unauthorized access and violations of regulations.
- Improved transparency of access to critical rooms and material assets.



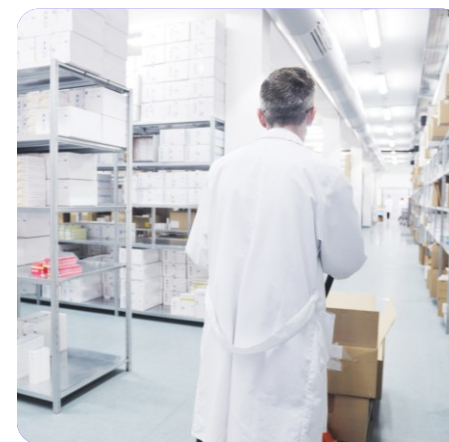
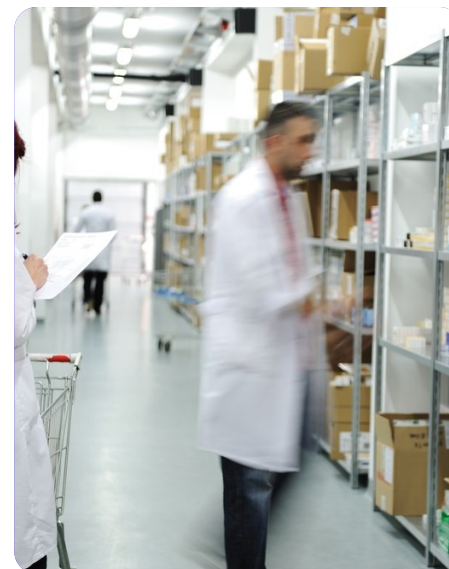
Visitor Flow and Queue Management

- Queue monitoring in reception areas, admission departments, waiting areas, and cashier points.
- Counting of visitors at entrances and exits.
- Analysis of visit intensity by time of day, day of week, and department.
- Assessment of waiting area occupancy and service quality.
- Data for schedule optimization, visitor routing, and staff allocation.



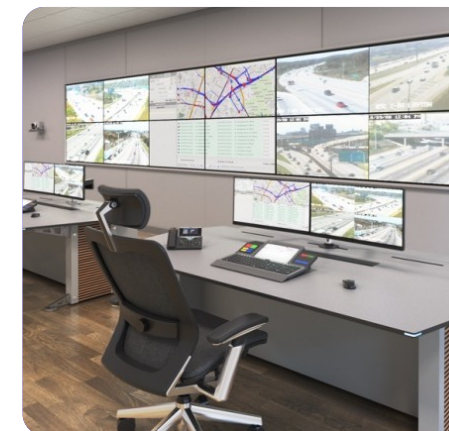
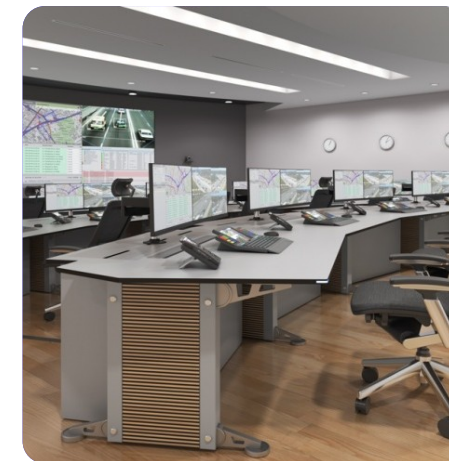
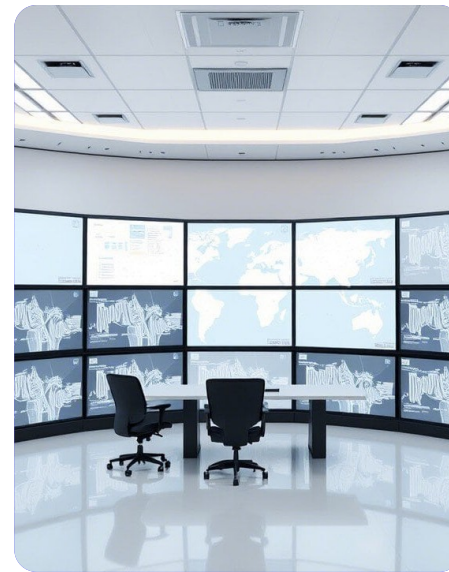
Control of Pharmacy Storage, Storage Conditions, and Dispensing

- Video monitoring of pharmacy storage areas, medication storage rooms, and dispensing zones.
- Recording of staff actions during receipt, storage, and dispensing of materials.
- Access control for material assets and incident logging.
- Reduction of losses, errors, and disputed situations.



Centralized and Remote Monitoring

- Single situational control center for several clinics, buildings, laboratories, and branches.
- Simultaneous connection to multiple video servers.
- Remote access to cameras, archives, and alarm events.
- User rights management by facility, zone, and role.
- Centralized event log and notifications for responsible employees.



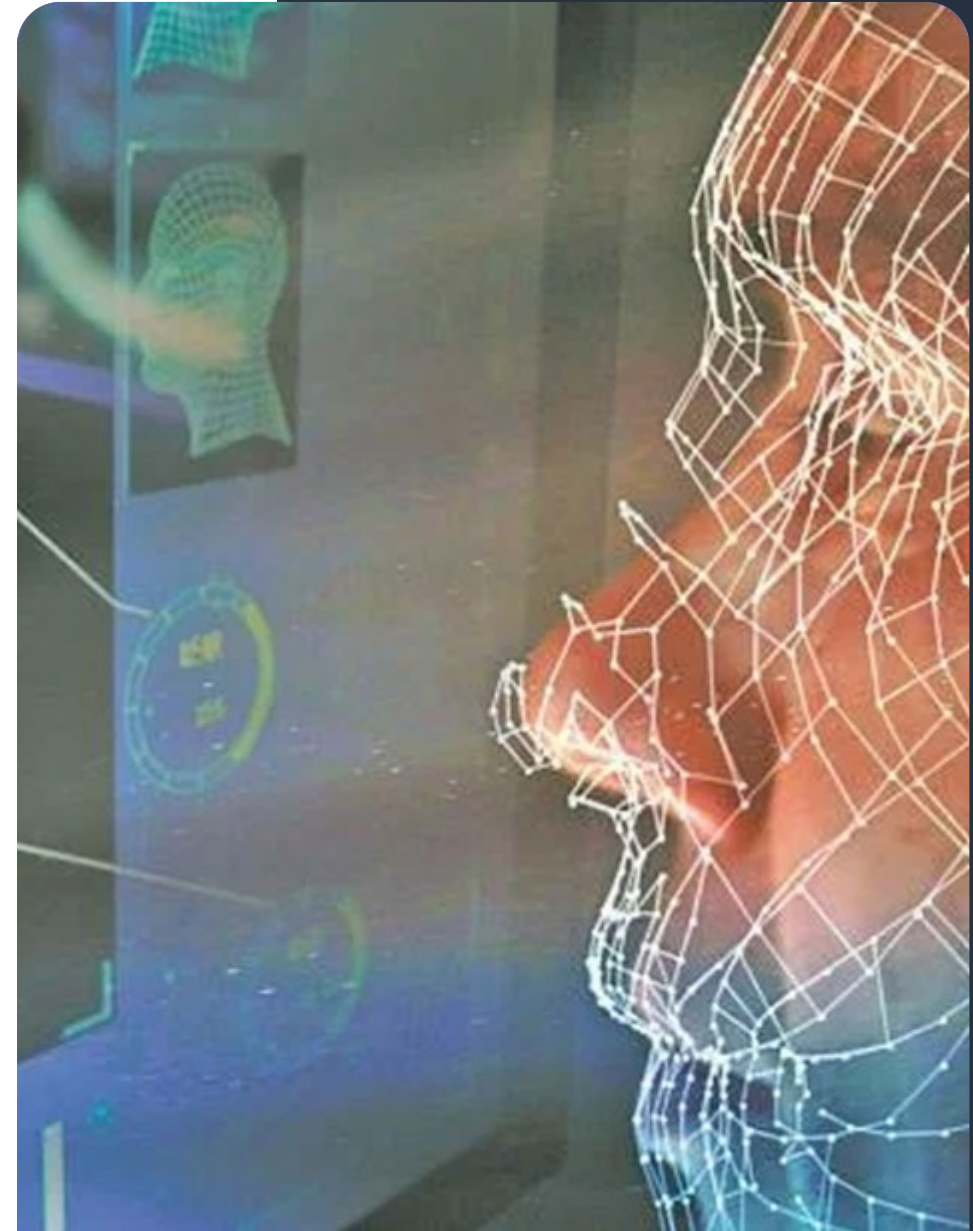
Face Recognition for Access Control and Security

Capabilities

- Identification of employees, contractors, and visitors using a face database.
- Access control to staff-only and restricted premises based on access level.
- White and black lists.
- Integration with access control systems and turnstiles.

Benefits

- Automation of access to critical areas based on biometrics.
- Lower risk of unauthorized access.
- Improved safety of patients, staff, and material assets.



Queue Detector and Visitor Counting

Capabilities

- Counting people in queues and waiting areas.
- Monitoring queue dynamics and average zone occupancy.
- Counting incoming and outgoing visitor flow.
- Generating statistics by time, department, and entry point.

Benefits

- Shorter waiting times and improved service quality.
- Optimized schedules for reception, cashier desks, and information desks.
- Data for attendance analysis and management decisions.



Abandoned Object Detector

Capabilities

- Detection of unattended objects in lobbies, corridors, admission departments, and waiting areas.
- Classification of objects as a bag, package, backpack, or another item.
- Analysis of how long an object remains in the monitored zone.

Benefits

- Improved safety in public and transit areas.
- Rapid alerting of the security service about potentially dangerous objects.
- Reduced risks for patients, staff, and infrastructure.



Smoke and Fire Detector

Capabilities

- Early detection of smoke and open flame indoors and in adjacent outdoor areas.
- Automatic alarm generation in real time.
- Transfer of events to external notification and dispatch systems.

Benefits

- Reduced response time to incidents.
- Improved fire safety of the medical facility.
- Support for evacuation and emergency localization scenarios.



Integration with External Systems

Capabilities

- Transfer of analytics events, alarms, video streams, and archive fragments to external systems.
- Integration with hospital information systems, access control systems, staff call systems, BI platforms, and dispatch systems.
- Receipt of external events and launch of reactions in Sagitech VMS.
- Use of SDK and HTTP API to build custom scenarios.

Benefits

- Creation of a unified digital environment for security and management of the medical organization.
- Automation of business processes without data duplication.
- Easier deployment within the customer's existing IT infrastructure.



Useful Enterprise Edition Functionality for Hospitals and Healthcare Facilities

Centralized management of hospitals and healthcare facilities: combining all facilities into a single video surveillance system. The Enterprise edition makes it possible to install a video server at each healthcare facility and combine them into a single domain for centralized control and management.

Centralized Control and Administration

- Management of an unlimited number of video servers within a single system;
- Flexible user role assignment for the entire domain;
- Access control policies, updates, proxying, and logging.

Automatic Equipment Addition

- Fast connection of new recorders to the system - manually or automatically.

Flexible Access Control

- Role-based access control for viewing, archiving, recording, configuration, and other operations;
- Tree-structured object permissions with inheritance: users only see authorized cameras;
- Centralized configuration of the entire domain;
- Brute-force password protection for stronger security.

Notifications and Integration

- Event notifications via Telegram and Email;
- Automatic alerts in case of failures or critical events.

Easy Setup & Updates

- Bulk software/configuration updates across servers;
- Configuration of servers and cameras from client software (no web UI needed).

Status Monitoring and Control

- Centralized monitoring of the network, disks, cameras, archives and databases;
- Flexible reporting on equipment status and user activity with filtration by time, objects and users.

Offline Operation

- Temporary disconnection from the central server does not affect critical operative functions of local servers.

SAGITECH >>



sales@sagitechlab.com
support@sagitechlab.com

www.sagitechlab.com