



**SAGITECH** ▶

## **Advantages of Sagitech VMS**

**intelligent video surveillance for  
industry**

# Sagitech VMS in numbers

Sagitech VMS combines proven development experience, customer trust, and real-world deployment across a wide range of projects.

A light gray world map is centered in the background of the infographic, showing the continents of North America, South America, Europe, Africa, Asia, and Australia.

**14**

Years of experience in video surveillance

**700 000+**

Connected video cameras

**3 500+**

Completed projects

**1 000+**

Regular trusted clients worldwide

**18**

Countries with Sagitech VMS Integration

# About Sagitech Lab

We focus on high-performance and user-friendly software for IP surveillance systems. Our solution enables building scalable systems with any number of servers, IP cameras and workstations. We ensure high-quality fulfillment of all the processes necessary for successful design, development and implementation of the software product.

## **We provide:**

- Reliable universal software created and tested for mass sales;
- More than 20 video analysis modules;
- An open platform with extensive integration capabilities via SDK and HTTP API;
- Support, regular updates and development of the software without additional costs and annual payments;
- Creation of custom functionality for customer needs.

# Sagitech VMS Capabilities



## Technology Highlights

- Supports 5,000+ camera models from 300 manufacturers;
- Integrates with fire/security systems, access control, cash counters, external mics, and more;
- SDK for third-party system integration.

## User-Friendly

- Intuitive interface;
- Setup in just 7 minutes;
- Technical support, software updates and continuous development.

## Cross-Platform Access

- Server and client applications for Windows and Linux;
- Mobile apps for iOS and Android;
- Web client compatible with all browsers.

## Intellectual

- Neural network detectors;
- Intelligent video analytics;
- Open API.

# Sagitech VMS in Industry



**Warehouses**



**Production**



**Perimeter Security**

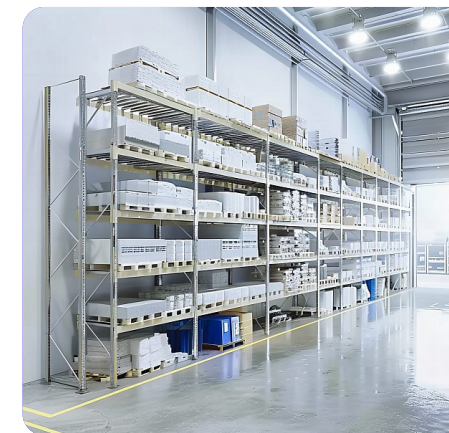
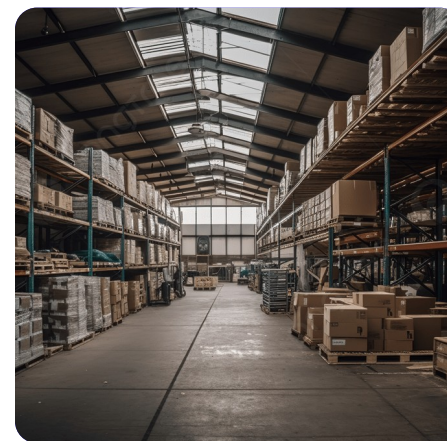


**Access Control**

## Sagitech VMS in Industry

Industrial facilities, production sites and logistics hubs require a unified security and monitoring platform for operations, people and assets.

Video surveillance systems for industrial facilities and warehouse complexes are designed to solve a wide range of security and operational efficiency tasks. Using Sagitech VMS video analytics improves perimeter protection, monitoring of adjacent areas and building facades, control of incoming and outgoing vehicles with license plate capture, overview of indoor warehouse zones and loading bays, as well as monitoring personnel and equipment operation.



# Typical Industry Use Cases

## Perimeter Security and Vehicle Access Control

- Video monitoring of industrial and warehouse perimeters
- Automatic vehicle detection
- Checkpoint entry/exit control
- Detection of boundary crossings
- Reduced workload on security staff
- Effective operation with a minimal number of cameras and guard posts

## Access Control and Theft Prevention

- Monitoring of entry to utility, warehouse and back-of-house areas
- Detection of unauthorized persons
- Capture of security regime violations
- Automatic alarm on intrusion or motion in restricted areas
- Protection of material assets
- All incidents logged in the event journal

## Fire Safety and Alarm Events

- Detection of smoke and open flame
- Control of open territories and warehouse sites
- Real-time alarm generation
- Reduced incident response time
- Higher efficiency of the security service

## Centralized and Remote Monitoring

- Centralized situational control across the enterprise
- Simultaneous connection to multiple servers
- Monitoring of geographically distributed facilities
- Remote access to cameras
- User permissions by access level
- Access only to authorized cameras and areas

# Analytics and Specialized Modules

## Face Recognition at the Checkpoint

### Capabilities

- Identification of suspicious persons
- Theft prevention
- Automatic access control for service areas
- Integration with access control systems

### Benefits

- Pass automation based on biometric data
- Creation of white and black lists to improve security and protect property
- Monitoring of employee working time and labor discipline



# Analytics and Specialized Modules

## Tracking and Control of Employee Working Time

### Capabilities

- Reports on employee working hours
- Detailed logs of entries and exits
- Tracking movement across production zones
- Presence analytics
- Export and integration capabilities



# Analytics and Specialized Modules

## Tracking and Control of Employee Presence at the Workplace

### Capabilities

- Detection of target object type: people
- Display of objects and alarm zones in viewing mode
- Generation of alarm events
- Search for alarm events in the archive
- Creation of staff activity reports for a defined zone



# Analytics and Specialized Modules

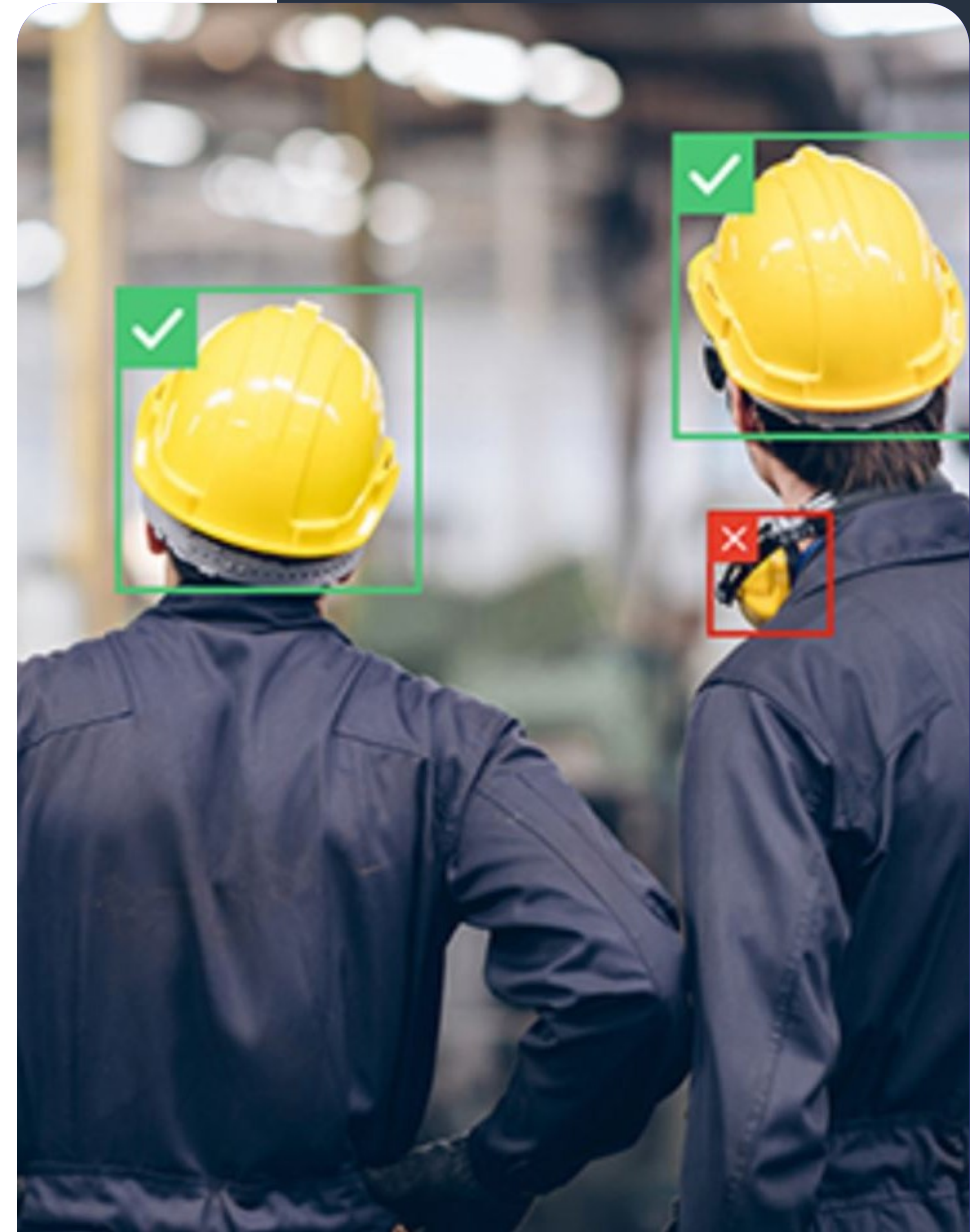
## PPE Control

### Capabilities

- Recognition of 15+ types of PPE
- Verification of presence and completeness
- High control accuracy

### Benefits

- 24/7 monitoring of labor safety and industrial safety compliance
- Reduced injuries, accidents and incidents
- Improved production discipline and fewer violations
- Real-time notification of responsible personnel and collection of evidence for violations



# Analytics and Specialized Modules

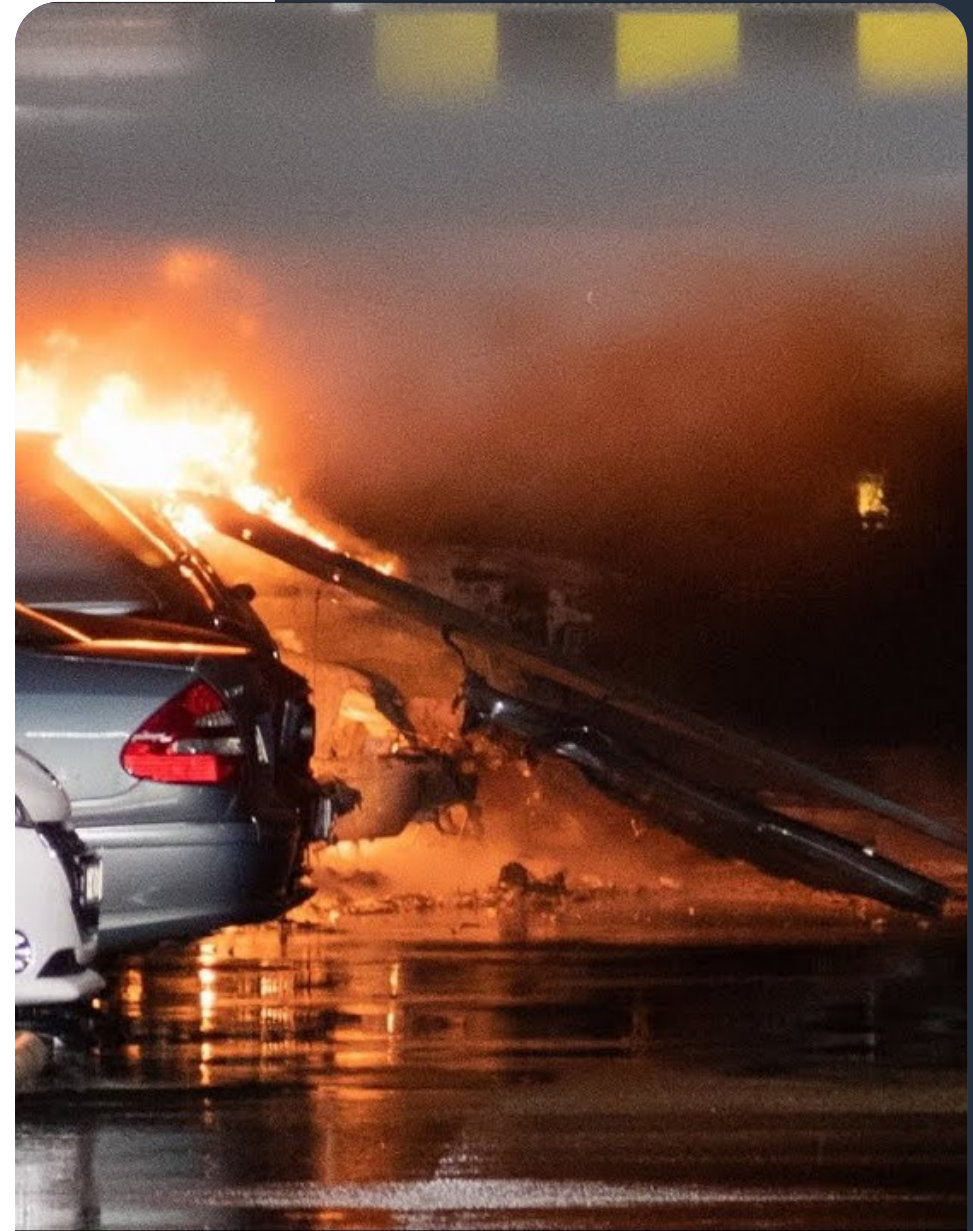
## Fire and Smoke Detector

### Capabilities

- Early-stage detection of fire and smoke
- Stable operation in challenging industrial conditions
- High detection accuracy

### Benefits

- Automatic fire and/or smoke detection enables rapid action to prevent fire spread and call the fire brigade
- Timely smoke alerts support fast evacuation and asset protection
- Saved video fragments help determine the origin and cause of the fire



# Analytics and Specialized Modules

## License Plate Recognition Module

### Capabilities

- Parking space accounting and parking management
- Control of barriers and gates by recognized license plates
- Detection of unauthorized vehicles
- Optimization of checkpoint operations

### Benefits

- Reduced time spent searching for a parking place
- Less congestion at entrances
- Automatic statistics on occupancy levels

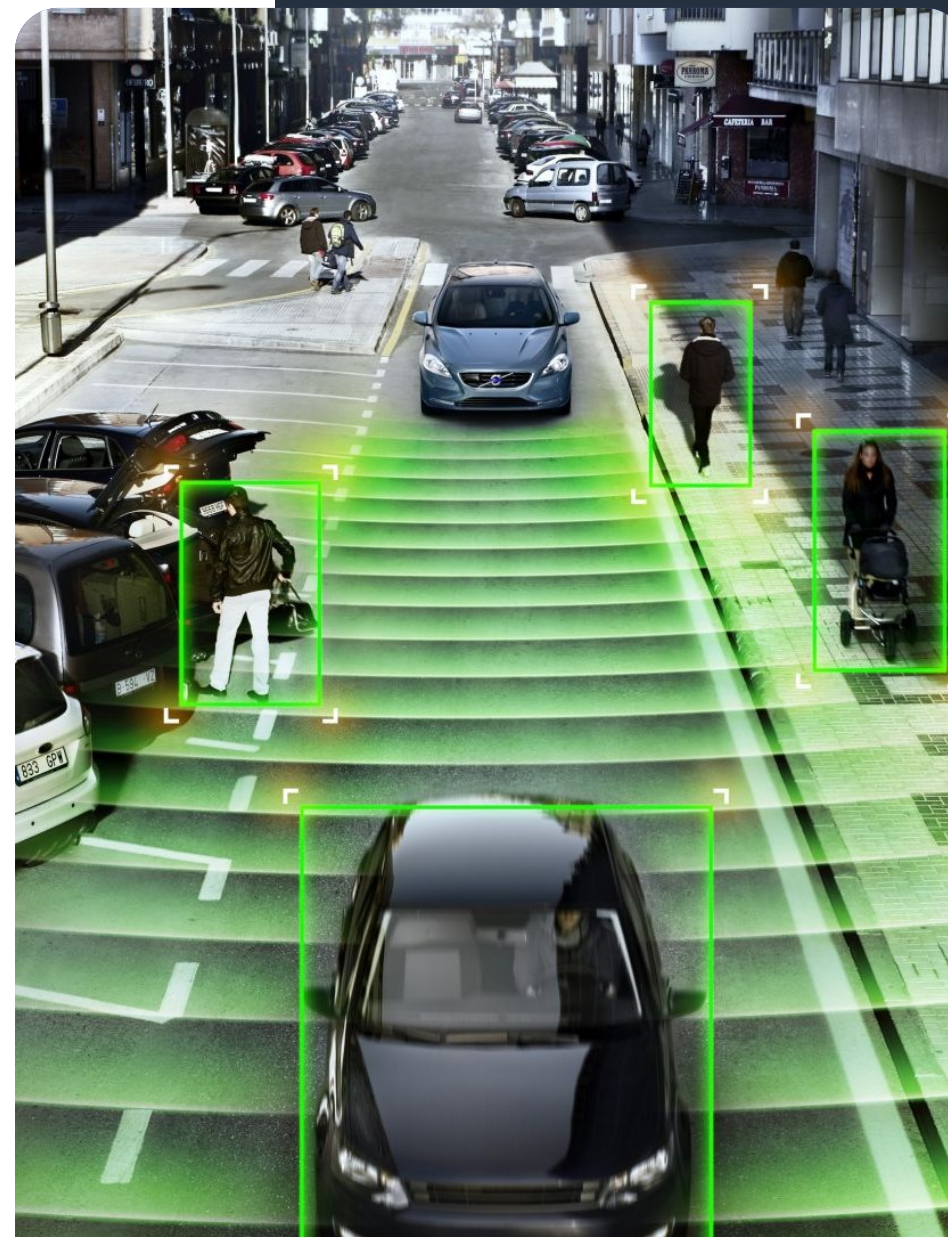


# Analytics and Specialized Modules

## Neural Network Object Detector

### Capabilities

- Detection and classification of an object as a person, vehicle or animal
- Movement control and theft prevention
- Detection of people in hazardous areas and prevention of accidents



# Analytics and Specialized Modules

## Neural Network Detector of Abandoned Objects

### Capabilities

- Detection of stationary objects
- Classification of the object as a bag, package or backpack
- Analysis of how long the object remains in place
- Prevention of threats to property and human life



# Analytics and Specialized Modules

## QR / Barcode Detector

### Capabilities

- Recognition of QR codes and barcodes
- Analysis of goods and package movement by barcode in warehouses

### Benefits

- Reduced human factor and manual input errors
- High processing speed
- Integration with ERP, WMS and CRM systems



# Analytics and Specialized Modules

## Integration with Access Control Systems

### Capabilities

- Receiving events and defining reactions
- Transfer of camera data and live / archived video
- Interaction with analytics modules
- Prevention of threats to property and human life



# Useful features of the Enterprise Edition for Industry

Centralized management of geographically distributed industrial facilities. Enterprise edition lets you install a video server at each site and unite them into a single domain for centralized monitoring and control.

## Centralized Control and Administration

- Management of an unlimited number of video servers within a single system;
- Flexible user role assignment for the entire domain;
- Access control policies, updates, proxying, and logging.

## Automatic Equipment Addition

- Fast connection of new recorders to the system - manually or automatically.

## Flexible Access Control

- Role-based access control for viewing, archiving, recording, configuration, and other operations;
- Tree-structured object permissions with inheritance: users only see authorized cameras;
- Centralized configuration of the entire domain;
- Brute-force password protection for stronger security.

## Notifications and Integration

- Event notifications via Telegram and Email;
- Automatic alerts in case of failures or critical events.

## Easy Setup & Updates

- Bulk software/configuration updates across servers;
- Configuration of servers and cameras from client software (no web UI needed).

## Status Monitoring and Control

- Centralized monitoring of the network, disks, cameras, archives and databases;
- Flexible reporting on equipment status and user activity with filtration by time, objects and users.

## Offline Operation

- Temporary disconnection from the central server does not affect critical operative functions of local servers.

SAGITECH >>



[sales@sagitechlab.com](mailto:sales@sagitechlab.com)  
[support@sagitechlab.com](mailto:support@sagitechlab.com)

[www.sagitechlab.com](http://www.sagitechlab.com)