



**SAGITECH** ▶

## **Advantages of Sagitech VMS**

**Intelligent video surveillance  
for logistics centers and  
warehouse complexes**

# Sagitech VMS in numbers

Sagitech VMS combines proven development experience, customer trust, and real-world deployment across a wide range of projects.

A light gray world map is centered in the background of the infographic, showing the outlines of continents and major landmasses.

**14**

Years of experience in video surveillance

**700 000+**

Connected video cameras

**3 500+**

Completed projects

**1 000+**

Regular trusted clients worldwide

**18**

Countries with Sagitech VMS Integration

# About Sagitech Lab

We focus on high-performance and user-friendly software for IP surveillance systems. Our solution enables building scalable systems with any number of servers, IP cameras and workstations. We ensure high-quality fulfillment of all the processes necessary for successful design, development and implementation of the software product.

## **We provide:**

- Reliable universal software created and tested for mass sales.
- More than 20 video analysis modules.
- An open platform with extensive integration capabilities via SDK and HTTP API.
- Support, regular updates and development of the software without additional costs and annual payments.
- Creation of custom functionality for customer needs.

# Sagitech VMS Capabilities



## Technology Highlights

- Supports 5,000+ camera models from 300 manufacturers.
- Integrates with fire/security systems, access control, cash counters, external mics, and more.
- SDK for third-party system integration.

## User-Friendly

- Intuitive interface.
- Setup in just 7 minutes.
- Technical support, software updates and continuous development.

## Cross-Platform Access

- Server and client applications for Windows and Linux.
- Mobile apps for iOS and Android.
- Web client compatible with all browsers.

## Intellectual

- Neural network detectors.
- Intelligent video analytics.
- Open API.

## Sagitech VMS for logistics, warehouses, and transport

### Key application areas

- Security of cargo and inventory assets.
- Management of fleet operations, entry points, exits, and transport flows.
- Security of public transport, terminals, and passenger areas.
- Centralized control of distributed logistics infrastructure.

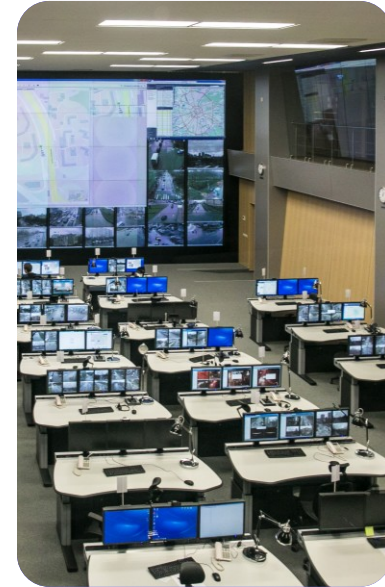
### A Unified Platform for Security and Operational Efficiency

Logistics centers, distribution warehouses, transport hubs, terminals, and loading sites need a single system to monitor facilities, personnel, vehicles, and material assets.

A video surveillance platform for logistics and warehouse operations helps solve both security and operational tasks. It provides perimeter and site monitoring, control of entry and exit points, visibility across warehouse zones and loading docks, tracking of cargo movement and staff activity, and fast incident investigation using the video archive.

With Sagitech VMS and built-in video analytics, operators can reduce losses, improve process discipline, speed up vehicle throughput, increase the transparency of warehouse operations, and centrally manage geographically distributed infrastructure.

# Intelligent video surveillance for logistics centers and warehouse complexes



**Security of cargo and  
warehouse zones**

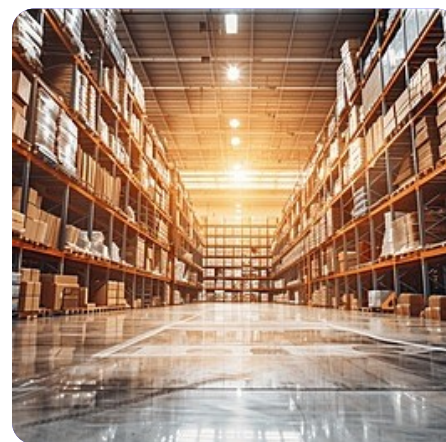
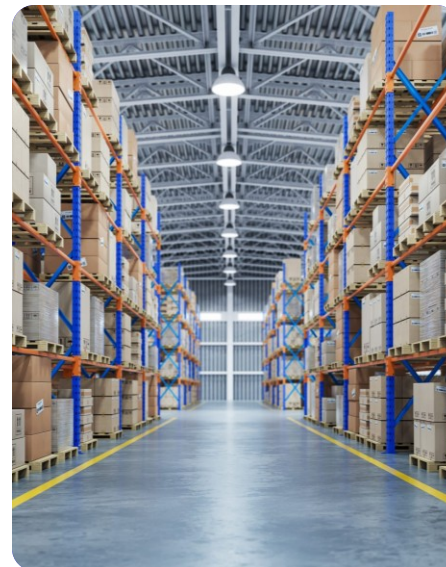
**Transport management  
and entry groups**

**Security of transport  
facilities and passenger  
areas**

**Centralized and remote  
monitoring**

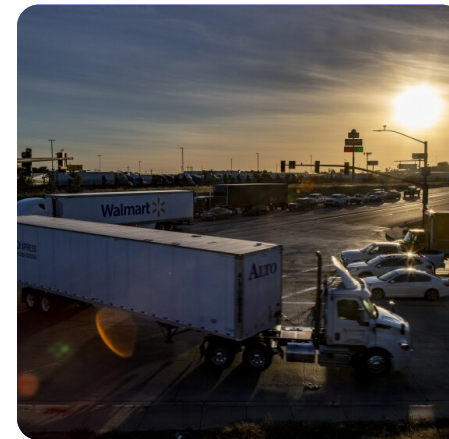
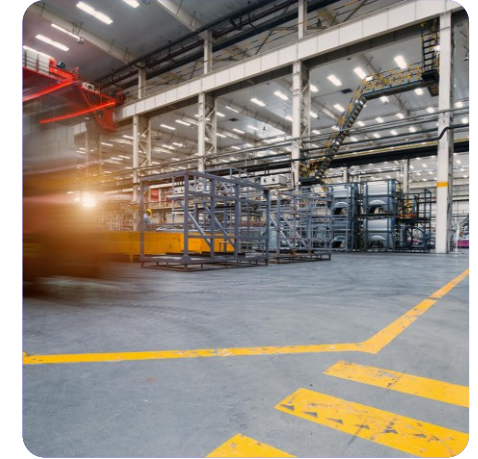
# Security of cargo and warehouse zones

- Video monitoring of storage, picking, shipping, and temporary goods placement areas.
- Detection of unauthorized removal or movement of cargo;
- Control of docks, gates, loading/unloading areas, and internal driveways.
- Recording of procedural violations and disputed situations during receiving and shipping.
- Quick search for the required archive episode by time, zone, or event.
- Reduction of losses and increased transparency of warehouse processes.



# Transport management and entry groups

- Recognition of license plates at entry and exit points.
- Monitoring of checkpoints, barriers, and gates for freight and service vehicles.
- Vehicle counting in the logistics yard, parking areas, and waiting zones.
- Detection of unauthorized, unregistered, or overstaying vehicles.
- Reduction of queues at entry and exit points;
- Transmission of data to external transport, ERP, and accounting systems.



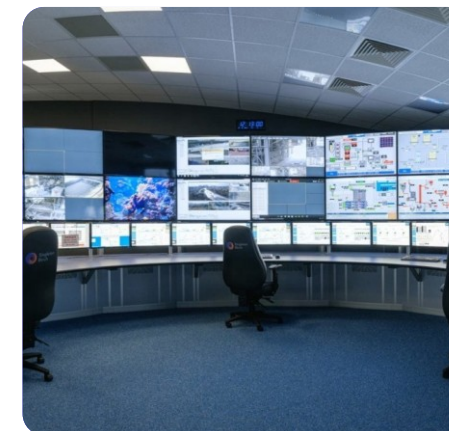
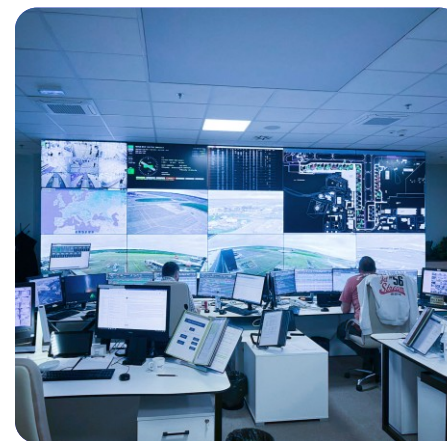
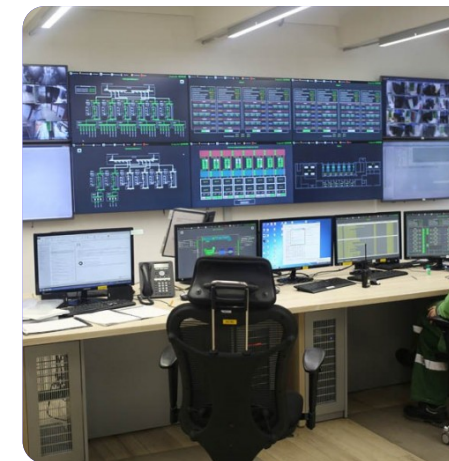
# Security of transport facilities and passenger areas

- Monitoring of platforms, terminals, boarding zones, and passenger premises.
- Detection of abandoned objects and suspicious behavior.
- Monitoring overcrowding in waiting and boarding areas.
- Control of vandalism and public order violations.
- Improved response speed of security services to alarm events.



# Centralized and remote monitoring

- Unified situational control of several warehouses, terminals, and transport sites.
- Simultaneous connection to multiple video servers.
- Remote access to cameras, archives, and alarm events.
- User rights management by facility, zone, and role.
- Centralized event log and notifications for responsible employees.
- Improved efficiency of security and operational departments.



# License plate recognition module

## Capabilities

- Recognition of license plates at entry points, exits, and internal transport zones.
- Search for transport events in the archive by plate number, time, and zone.
- Recording of vehicle entries and exits, and monitoring of time spent on site.
- Control of barriers and gates based on the recognized plate number.
- Detection of unauthorized vehicles.

## Benefits

- Automation of checkpoint operations and reduced staff workload.
- Reduction of vehicle idle time at entry groups.
- More accurate accounting of transport flows and logistics operations.
- Integration with access control, parking, and transport systems.



# QR / barcode detector

## Capabilities

- Recognition of QR codes and barcodes on goods, boxes, pallets, and documents.
- Control of cargo and package movement in storage and shipping areas.
- Matching of visual events with product labeling.
- Use in warehouse accounting, receiving, and picking scenarios.

## Benefits

- Reduced impact of human error and manual data entry mistakes.
- Increased speed of cargo processing and warehouse operations.
- Integration with ERP, WMS, CRM, and other accounting systems.



# Neural-network vehicle detector and vehicle counting

## Capabilities

- Detection and classification of vehicles in the frame.
- Vehicle counting from video streams in parking areas, entry points, and internal driveways.
- Monitoring of occupancy in parking lots, waiting zones, and logistics yards.
- Generation of alarms in case of congestion, route violations, or vehicles appearing in restricted zones.

## Benefits

- Improved accuracy of transport analytics.
- Control of throughput and site occupancy.
- Optimization of transport logistics and adjacent infrastructure operation.



# Abandoned object detector

## Capabilities

- Detection of stationary objects in passenger and warehouse areas.
- Classification of objects such as a bag, package, backpack, or other item.
- Analysis of the time an object remains in the monitored area.
- Generation of alarm events when the permitted dwell time is exceeded.

## Benefits

- Improved safety of terminals, stations, stops, and passenger areas.
- Reduced risks for people, infrastructure, and cargo.
- Fast response to potentially dangerous situations.



# Staff presence and activity monitoring in work zones

## Capabilities

- Detection of people in designated zones of a warehouse, terminal, or industrial logistics site.
- Monitoring of employee presence in loading, receiving, picking, and vehicle service areas.
- Generation of reports on personnel activity in selected zones.
- Search for alarm events in the archive.

## Benefits

- Improved process discipline and operational transparency.
- Monitoring of compliance with procedures and employee presence in key areas.
- Additional data for identifying bottlenecks and optimizing operations.



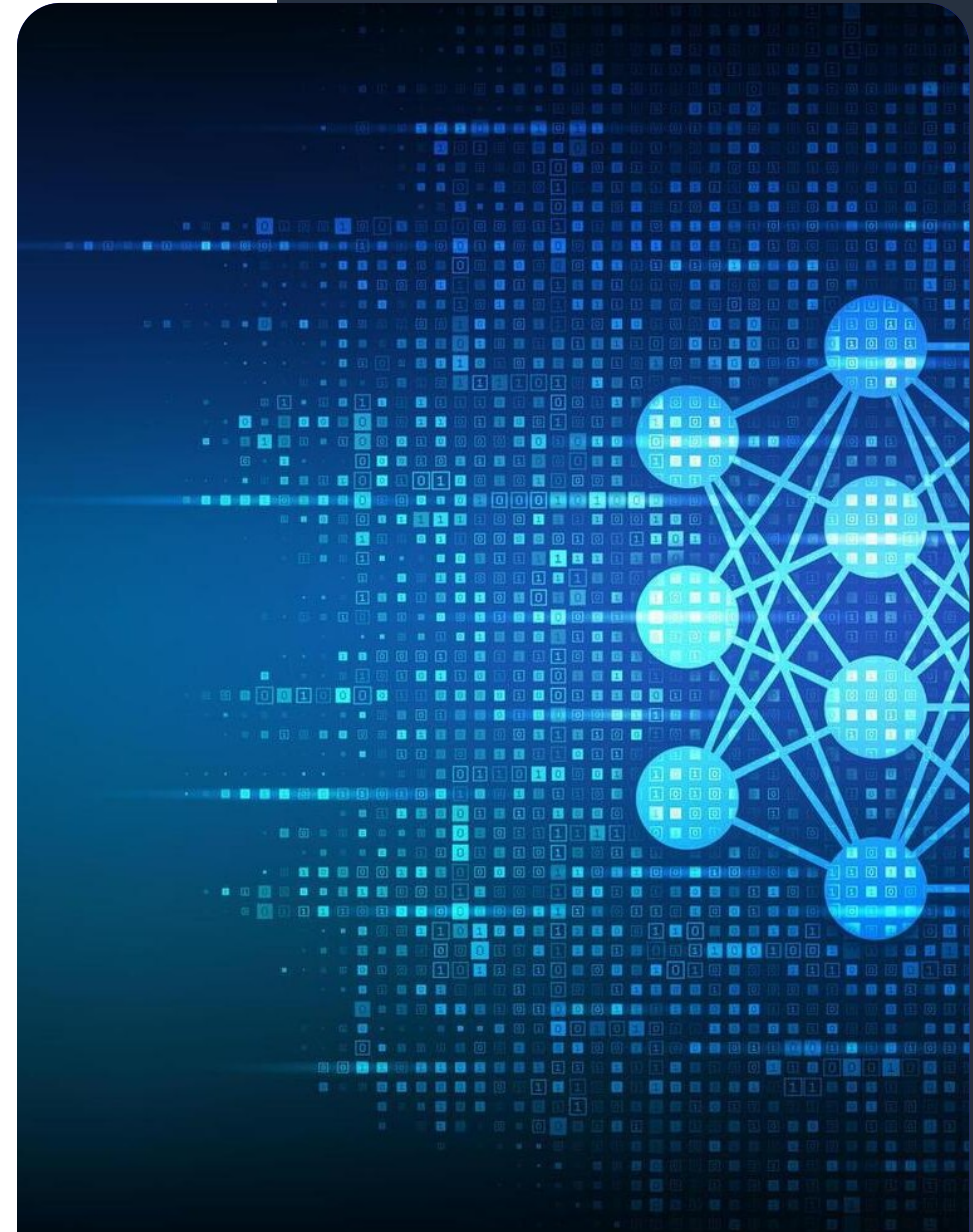
## Integration with external systems

### Capabilities

- Transmission of analytics events, alarms, video streams, and archive fragments to external systems.
- Integration with WMS, ERP, TMS, access control, dispatching systems, and BI platforms.
- Receiving external events and triggering responses in Sagitech VMS.
- Use of SDK and HTTP API to build custom scenarios.

### Benefits

- Creation of a unified digital environment for security and logistics management.
- Automation of business processes without data duplication.
- Simplified implementation within the customer's existing IT infrastructure.



# Useful Enterprise edition functionality for logistics centers and warehouse complexes

Centralized management of warehouse complexes and logistics centers. Consolidation of all facilities into a single video surveillance system. The Enterprise edition makes it possible to install a video server at each logistics site and combine them into a single domain for centralized monitoring and management.

## Centralized Control and Administration

- Management of an unlimited number of video servers within a single system;
- Flexible user role assignment for the entire domain;
- Access control policies, updates, proxying, and logging.

## Automatic Equipment Addition

- Fast connection of new recorders to the system - manually or automatically.

## Flexible Access Control

- Role-based access control for viewing, archiving, recording, configuration, and other operations;
- Tree-structured object permissions with inheritance: users only see authorized cameras;
- Centralized configuration of the entire domain;
- Brute-force password protection for stronger security.

## Notifications and Integration

- Event notifications via Telegram and Email;
- Automatic alerts in case of failures or critical events.

## Easy Setup & Updates

- Bulk software/configuration updates across servers;
- Configuration of servers and cameras from client software (no web UI needed).

## Status Monitoring and Control

- Centralized monitoring of the network, disks, cameras, archives and databases;
- Flexible reporting on equipment status and user activity with filtration by time, objects and users.

## Offline Operation

- Temporary disconnection from the central server does not affect critical operative functions of local servers.

SAGITECH >>



[sales@sagitechlab.com](mailto:sales@sagitechlab.com)  
[support@sagitechlab.com](mailto:support@sagitechlab.com)

[www.sagitechlab.com](http://www.sagitechlab.com)