



SAGITECH ▶

Advantages of Sagitech VMS

Intelligent Video Surveillance for Real Estate Properties

Sagitech VMS in numbers

Sagitech VMS combines proven development experience, customer trust, and real-world deployment across a wide range of projects.

A light gray world map is centered in the background of the infographic, showing the continents of North America, South America, Europe, Africa, Asia, and Australia.

14

Years of experience in video surveillance

700 000+

Connected video cameras

3 500+

Completed projects

1 000+

Regular trusted clients worldwide

18

Countries with Sagitech VMS Integration

About Sagitech Lab

We focus on high-performance and user-friendly software for IP surveillance systems. Our solution enables building scalable systems with any number of servers, IP cameras and workstations. We ensure high-quality fulfillment of all the processes necessary for successful design, development and implementation of the software product.

We provide:

- Reliable universal software created and tested for mass sales;
- More than 20 video analysis modules;
- An open platform with extensive integration capabilities via SDK and HTTP API;
- Support, regular updates and development of the software without additional costs and annual payments;
- Creation of custom functionality for customer needs.

Sagitech VMS Capabilities



Technology Highlights

- Supports 5,000+ camera models from 300 manufacturers;
- Integrates with fire/security systems, access control, cash counters, external mics, and more;
- SDK for third-party system integration.

User-Friendly

- Intuitive interface;
- Setup in just 7 minutes;
- Technical support, software updates and continuous development.

Cross-Platform Access

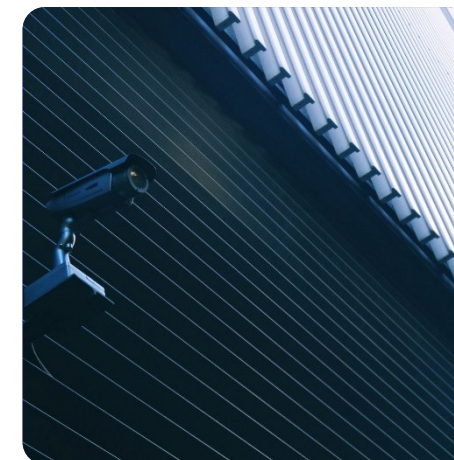
- Server and client applications for Windows and Linux;
- Mobile apps for iOS and Android;
- Web client compatible with all browsers.

Intellectual

- Neural network detectors;
- Intelligent video analytics;
- Open API.

Comprehensive property management with Sagitech VMS

- Access control for residents, staff and visitors;
- Event-driven video monitoring;
- Incident detection and resolution;
- Rapid response to events;
- Integration with OPS, ACS and video intercoms;
- Parking management;
- Remote monitoring from anywhere.



Sagitech VMS for Real-Estate Safety & Monitoring



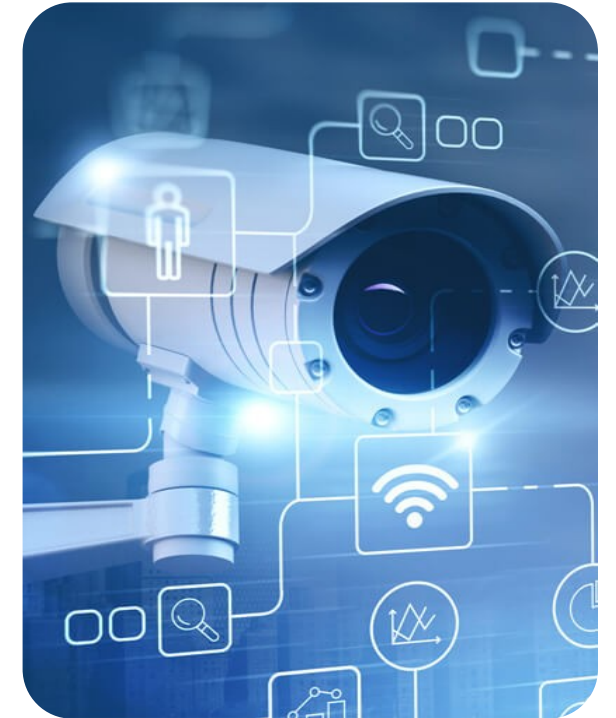
VIDEO SURVEILLANCE

- 24/7 site monitoring;
- Detection of perimeter breaches and safety assurance;
- Video archive for settling conflicts, incidents and disputes.



ACCESS CONTROL

- Integration with access-control and intercom systems;
- Two-factor verification based on biometrics;
- Checkpoint and parking-lot management.



VIDEO ANALYTICS

- License plate recognition;
- Person identification & search via face database;
- Interactive archive search by specific attributes;
- Fire, smoke and abandoned-object detection.

Commercial Real Estate



Commercial Real Estate

Vehicle Access & Parking Control

License Plate Recognition

- Barrier and gate control by recognized plate;
- Free-space accounting and parking management;
- Detection of unauthorized vehicles.

Benefits

- Parking automation and checkpoint optimization;
- Guest and permanent passes to enhance security;
- Integration with barriers, gates and turnstiles.



Commercial Real Estate

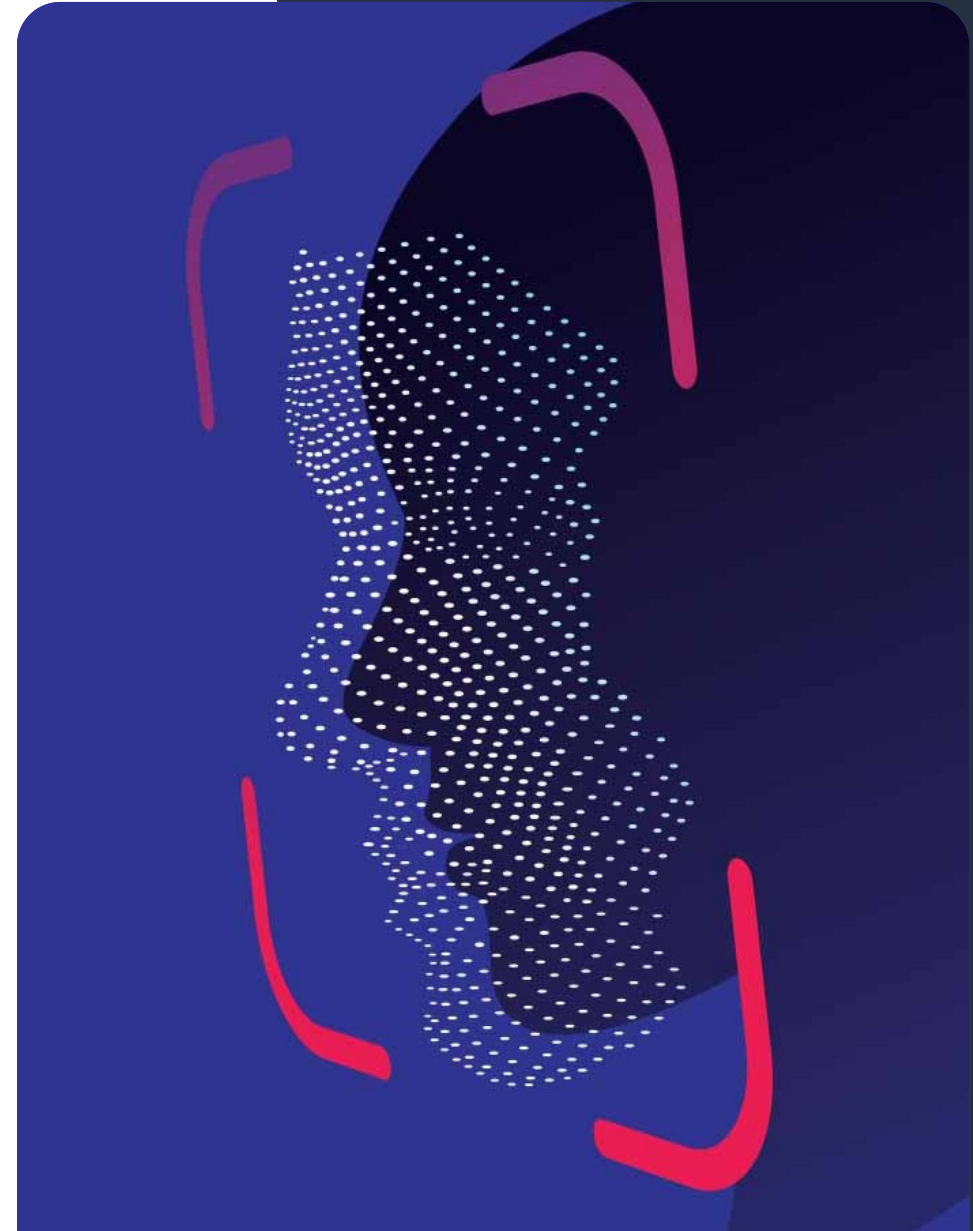
Tenant & Visitor Access

Face Recognition

- Access control by recognized face according to clearance level;
- Two-factor authentication;
- Analysis of human movement through the facility.

Benefits

- Automated pass system based on biometrics;
- Alerts about unwanted visitors;
- Movement analytics for safety and dispute resolution.



Commercial Real Estate

Security & Threat Prevention

Left-Object Detector

- Detection of stationary objects;
- Object-type identification: bag, package, backpack;
- Time-based surveillance of an object left unattended;
- Threat prevention to property and life.

Neural Network Object Detector

- Object detection and classification: person, vehicle, or animal;
- Movement tracking and theft prevention;
- People detection in the dangerous zone and accidents prevention.

Benefits

- Perimeter security outside of working hours;
- Instant warnings of intrusion or left objects;
- Event recording to forestall threats and resolve conflicts.



Shopping Malls



Shopping Malls

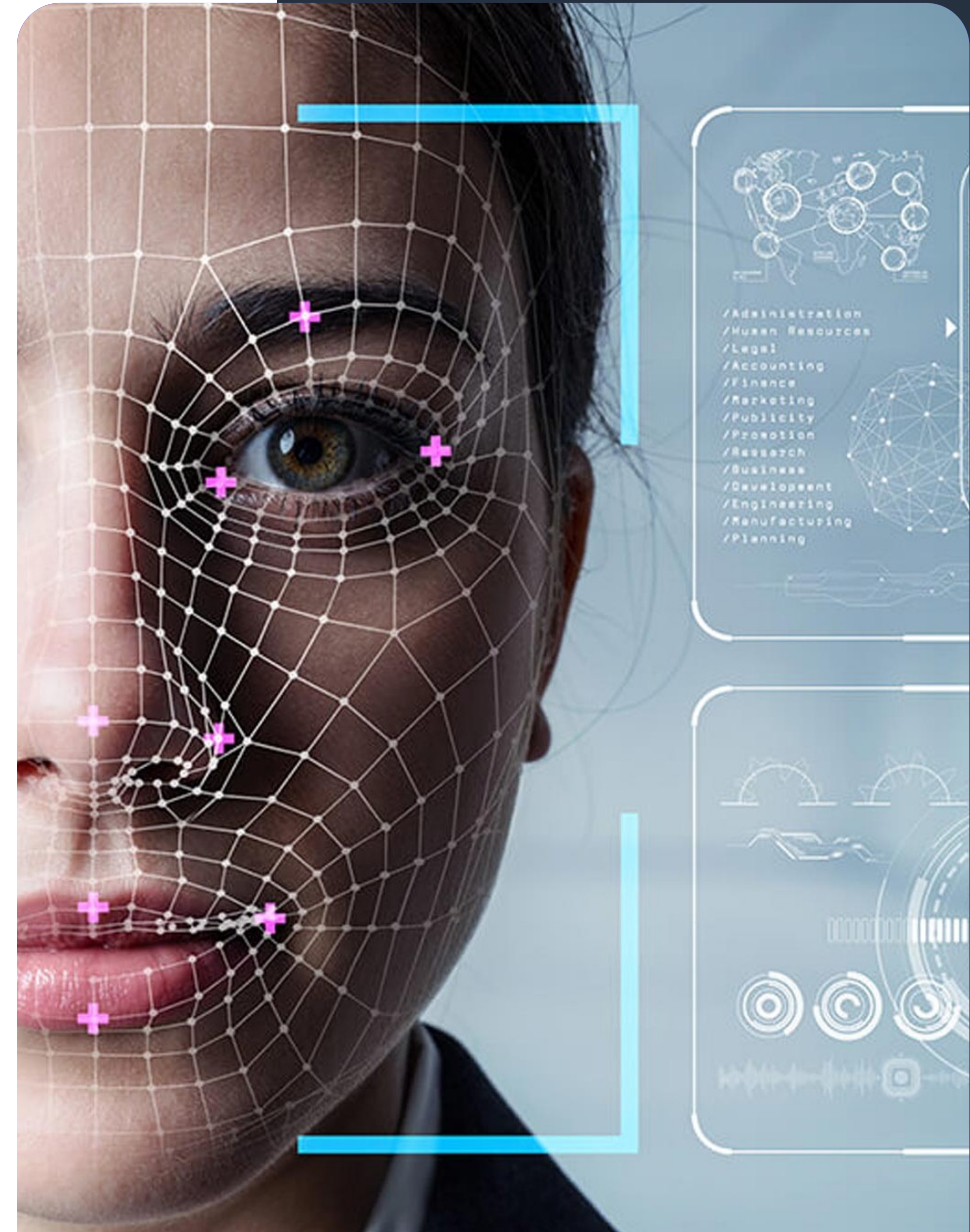
Audience Profiling

Face Analytics

- Unique visitors counting;
- Exclusion of staff/partners from statistics;
- Demographic analysis to determine the target audience;
- Real-time statistics.

Benefits

- Improving the quality of service: identifying VIP clients and offering personalized services;
- Attendance monitoring, sales and footfall analysis;
- Evaluating the effectiveness of advertising campaigns, analysis of showcases and exhibition stands attractiveness.



Shopping Malls

Visitor Traffic

Heat-Map

- Popularity analysis of zones (departments, counters, displays);
- Visit statistics for different areas;
- Intensity and main movement-paths assessment.

Benefits

- Space optimization by identifying hot and “dead” zones;
- Analysis of places and time of visitors' activity for planning of promotions and placement of advertising stands;
- Justifying rental rates.



Shopping Malls

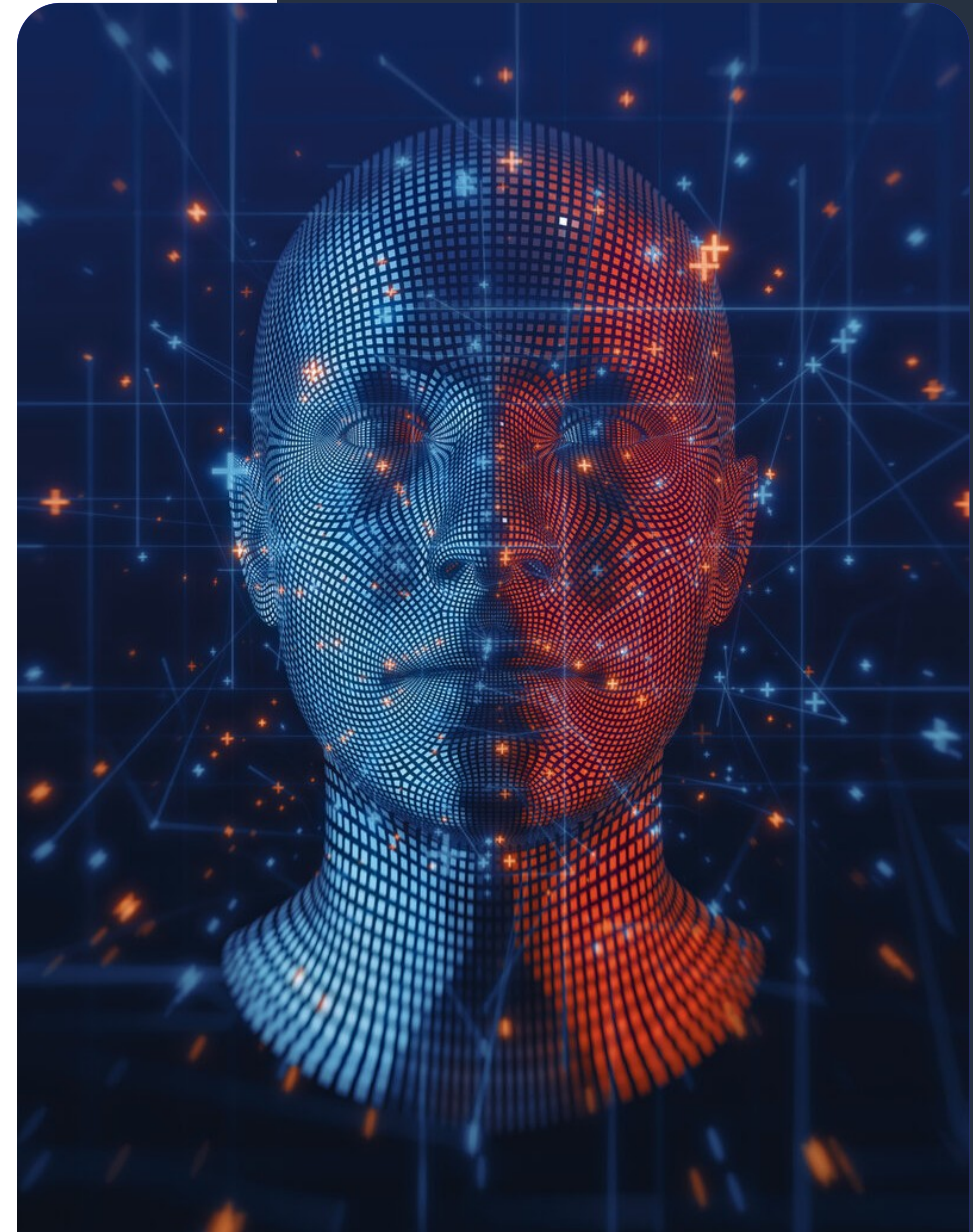
Face Recognition for Theft Prevention

Face Recognition

- Identification of suspicious individuals;
- Theft prevention;
- Automatic access control to office premises;
- Integration with access control systems (ASC).

Benefits

- Automation of access control using biometric data;
- Creating “black” and “white” lists to ensure safety and security of the property;
- Employee operating time and discipline tracking.



Residential Complexes



Residential Complexes

Automatic Vehicle Access & Guest Parking

License Plate Recognition

- Entry by recognized license plate;
- Issuing guest passes;
- Vacant-space accounting.

Benefits

- Automatic gate and barrier control;
- Parking management;
- Statistics and history of site entries.



Residential Complexes

Complex Entry

Face Recognition

- Face-based entry for residents;
- Analyzing the movement of people within the territory of the residential area;
- Video-intercom integration.

Benefits

- Biometric-based admission;
- Alerts on unwanted visitors;
- Movement analytics for safety.



Residential Complexes

24/7 Monitoring & Recording

- Round-the-clock video surveillance;
- Access to video cameras in the mobile app for residents of the housing estate;
- Remote access worldwide.

Benefits

- 24/7 surveillance access;
- Remote monitoring allows for prompt and timely resolution of disputable situations and conflicts;
- Interactive archive search to investigate incidents.



Residential Complexes

Enhanced Safety

Fire & Smoke Detector

- Early-stage fire and smoke detection;
- Automatic smoke/fire alerts;
- High accuracy via advanced computer vision & AI.

Benefits

- Automatic fire and smoke detection for rapid call to the fire brigade;
- Smoke alerts for evacuation and asset protection;
- Determining outbreak source and cause from video.



Useful features of the Enterprise Edition for Real Estate Properties

Centralized management of real estate properties. Consolidation of all facilities into a single video surveillance system. The Enterprise edition makes it possible to install a video server at each property and unite them into a single domain for centralized control and management.

Centralized Control and Administration

- Management of an unlimited number of video servers within a single system;
- Flexible user role assignment for the entire domain;
- Access control policies, updates, proxying, and logging.

Automatic Equipment Addition

- Fast connection of new recorders to the system - manually or automatically.

Flexible Access Control

- Role-based access control for viewing, archiving, recording, configuration, and other operations;
- Tree-structured object permissions with inheritance: users only see authorized cameras;
- Centralized configuration of the entire domain;
- Brute-force password protection for stronger security.

Notifications and Integration

- Event notifications via Telegram and Email;
- Automatic alerts in case of failures or critical events.

Easy Setup & Updates

- Bulk software/configuration updates across servers;
- Configuration of servers and cameras from client software (no web UI needed).

Status Monitoring and Control

- Centralized monitoring of the network, disks, cameras, archives and databases;
- Flexible reporting on equipment status and user activity with filtration by time, objects and users.

Offline Operation

- Temporary disconnection from the central server does not affect critical operative functions of local servers.

SAGITECH >>



sales@sagitechlab.com
support@sagitechlab.com

www.sagitechlab.com