



SAGITECH >>

Advantages of Sagitech VMS

Intelligent Video Surveillance for Retail

Sagitech VMS in numbers

Sagitech VMS combines proven development experience, customer trust, and real-world deployment across a wide range of projects.

A light gray world map is centered in the background of the infographic, showing the continents of North America, South America, Europe, Africa, Asia, and Australia.

14

Years of experience in video surveillance

700 000+

Connected video cameras

3 500+

Completed projects

1 000+

Regular trusted clients worldwide

18

Countries with Sagitech VMS Integration

About Sagitech Lab

We focus on high-performance and user-friendly software for IP surveillance systems. Our solution enables building scalable systems with any number of servers, IP cameras and workstations. We ensure high-quality fulfillment of all the processes necessary for successful design, development and implementation of the software product.

We provide:

- Reliable universal software created and tested for mass sales;
- More than 20 video analysis modules;
- An open platform with extensive integration capabilities via SDK and HTTP API;
- Support, regular updates and development of the software without additional costs and annual payments;
- Creation of custom functionality for customer needs.

Sagitech VMS Capabilities



Technology Highlights

- Supports 5,000+ camera models from 300 manufacturers;
- Integrates with fire/security systems, access control, cash counters, external mics, and more;
- SDK for third-party system integration.

User-Friendly

- Intuitive interface;
- Setup in just 7 minutes;
- Technical support, software updates and continuous development.

Cross-Platform Access

- Server and client applications for Windows and Linux;
- Mobile apps for iOS and Android;
- Web client compatible with all browsers.

Intellectual

- Neural network detectors;
- Intelligent video analytics;
- Open API.

Retail Applications of Sagitech VMS



Hypermarkets



Retail chains



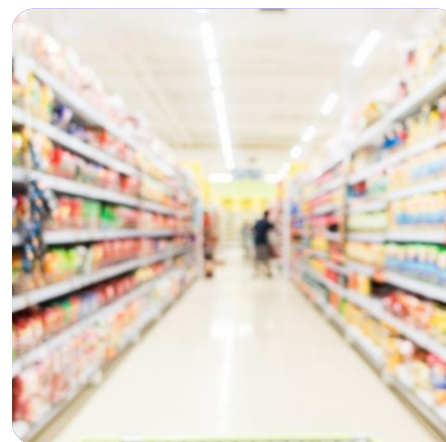
Kiosks



Shopping malls

Sagitech VMS Retail Features

- Provides store traffic statistics, determines conversion rates and identifies the most visited departments.
- Monitors the quality of staff performance, prevents theft and fraud, and restricts access to office and staff-only areas.
- Performs centralized and remote monitoring of the situation.



Sagitech VMS is widely used in retail

Cash register area

- Fraud prevention;
- Control over compliance with cash discipline;
- Reducing employee errors;
- Reduction of reputational risks;
- Queue management and service quality improvement;
- Optimization of cash desk schedule.

Sales Area

- Shop windows condition control;
- Staff behavior observation and analysis;
- Collection and analysis of marketing statistics;
- Theft prevention;
- Data collection for merchandising planning.

Office

- Report generation;
- Store performance analytics;
- Monitoring and centralized process management.

Entrance Areas

- Conversion analysis;
- Counting unique/repeat visitors;
- Target audience identification;
- Marketing campaign effectiveness evaluation.

Warehouse

- Theft/damage prevention;
- Warehouse operation monitoring;
- Employee activity control;
- Working hours tracking.

Parking and Loading Zones

- Vehicle access control;
- Safety compliance;
- Parking spots tracking.

Analytics and Specialized Modules

Cash Operation Monitoring

Capabilities

- Compatible with most POS systems;
- Cashier actions monitoring during product sales and customer transactions;
- Prevention of material loss.

Benefits

- Lower losses due to employee errors, better discipline;
- Theft/fraud prevention;
- Improved service quality.



Analytics and Specialized Modules

Heat Map

Capabilities

- Demand analysis for areas, stands, and showcases;
- Visitor statistics for different locations;
- People traffic pattern analysis (main route and intensity).

Benefits

- Optimization of commercial and office space by identifying popular and “dead” zones;
- Visitors’ activity analysis for planning promotions based on visitor hotspots;
- Control of product availability and placement, planning of purchases based on popularity of shelves;
- Optimal staff allocation based on demand during different periods.



Analytics and Specialized Modules

Face Recognition for Theft Prevention

Capabilities

- Identification of suspicious individuals;
- Theft prevention;
- Automatic access control to office premises;
- Integration with access control systems (ASC).

Benefits

- Automation of access control using biometric data;
- Creating “black” and “white” lists to ensure safety and security of the property;
- Employee operating time and discipline tracking.



Analytics and Specialized Modules

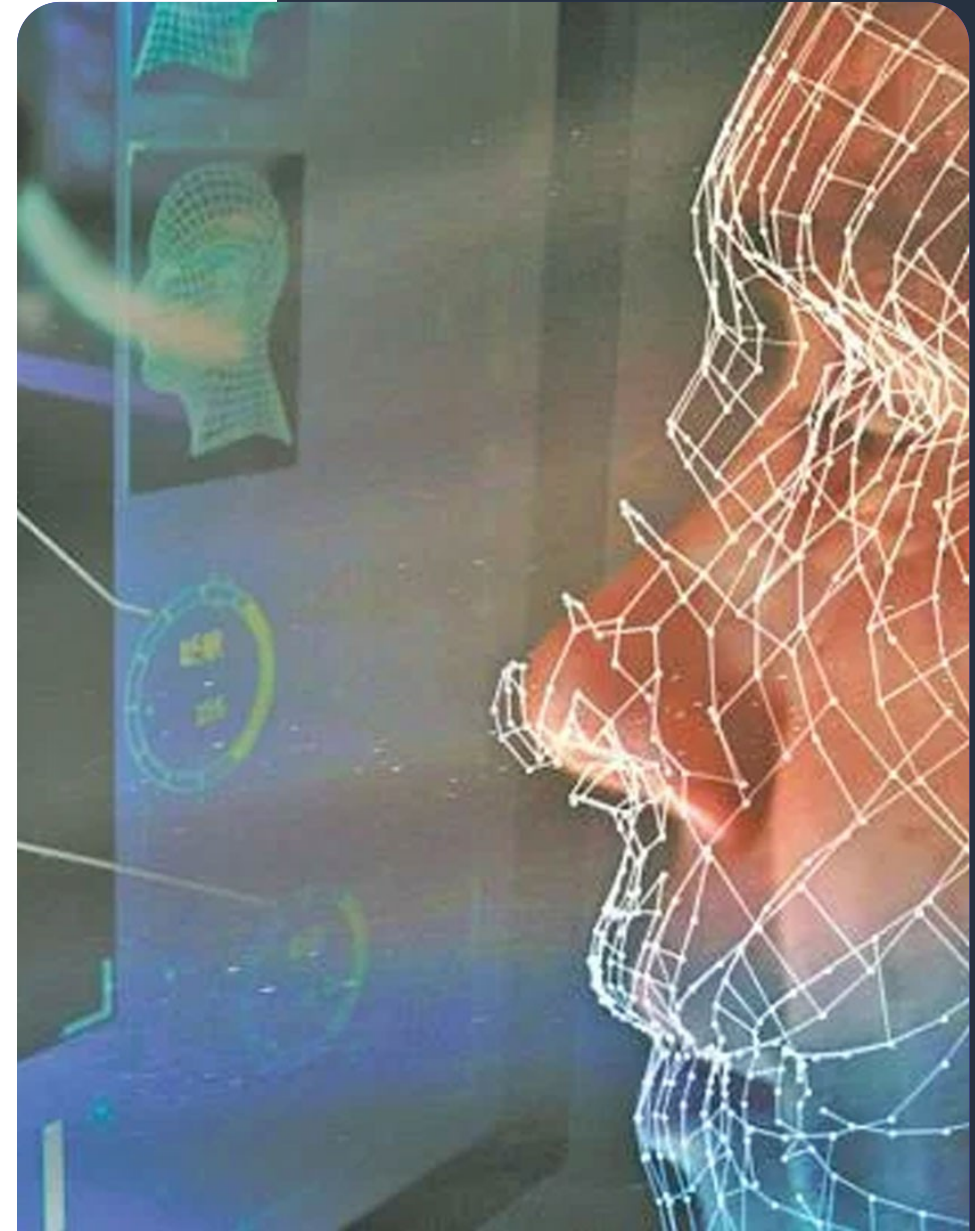
Face Recognition and Analytics

Capabilities

- Unique visitors counting;
- Exclusion of staff/partners from statistics;
- Demographic analysis to determine the target audience;
- Real-time statistics.

Benefits

- Improving the quality of service: identifying VIP clients and offering personalized services;
- Attendance monitoring, sales and footfall analysis;
- Evaluating the effectiveness of advertising campaigns, analysis of showcases and exhibition stands attractiveness.



Analytics and Specialized Modules

Queue Detector

Capabilities

- Queue size tracking;
- Queue flow monitoring.

Benefits

- Reduced waiting time in queue and improved quality of service;
- Increase of loyalty and repeat purchase percentages;
- Staff schedule optimization;
- Increased efficiency of production processes.



Analytics and Specialized Modules

Neural Network People Counter

Capabilities

- In/out visitor counting using neural networks;
- Movement direction analysis;
- Traffic evaluation.

Benefits

- Attendance monitoring: determination of sales area conversion, sales forecasting;
- Evaluating staff performance and service level improvement;
- Adjustment of the staff schedule;
- Promotional activities analysis, evaluation of the attractiveness of displays and stands.



Analytics and Specialized Modules

License Plate Recognition

Capabilities

- Occupancy accounting and parking management;
- Automated control of barriers and gates with recognized license plates;
- Detection of unauthorized vehicles;
- Security checkpoint operation optimization.

Benefits

- Reducing the time spent searching for a parking space;
- Reducing traffic jams at entrances;
- Automated parking load statistics.



Analytics and Specialized Modules

QR/Barcode Detector

Capabilities

- QR code and barcode recognition;
- Goods/packaging tracking in warehouses by barcodes.

Benefits

- Reduction of manual entry errors;
- High processing speed;
- Integration capability with ERP, WMS, and CRM systems.



Analytics and Specialized Modules

Neural Network Abandoned Object Detector

Capabilities

- Detection of stationary objects;
- Object type identification: bag, packages or backpack;
- Time-based surveillance of an object left unattended;
- Prevention of threats to property and human life.

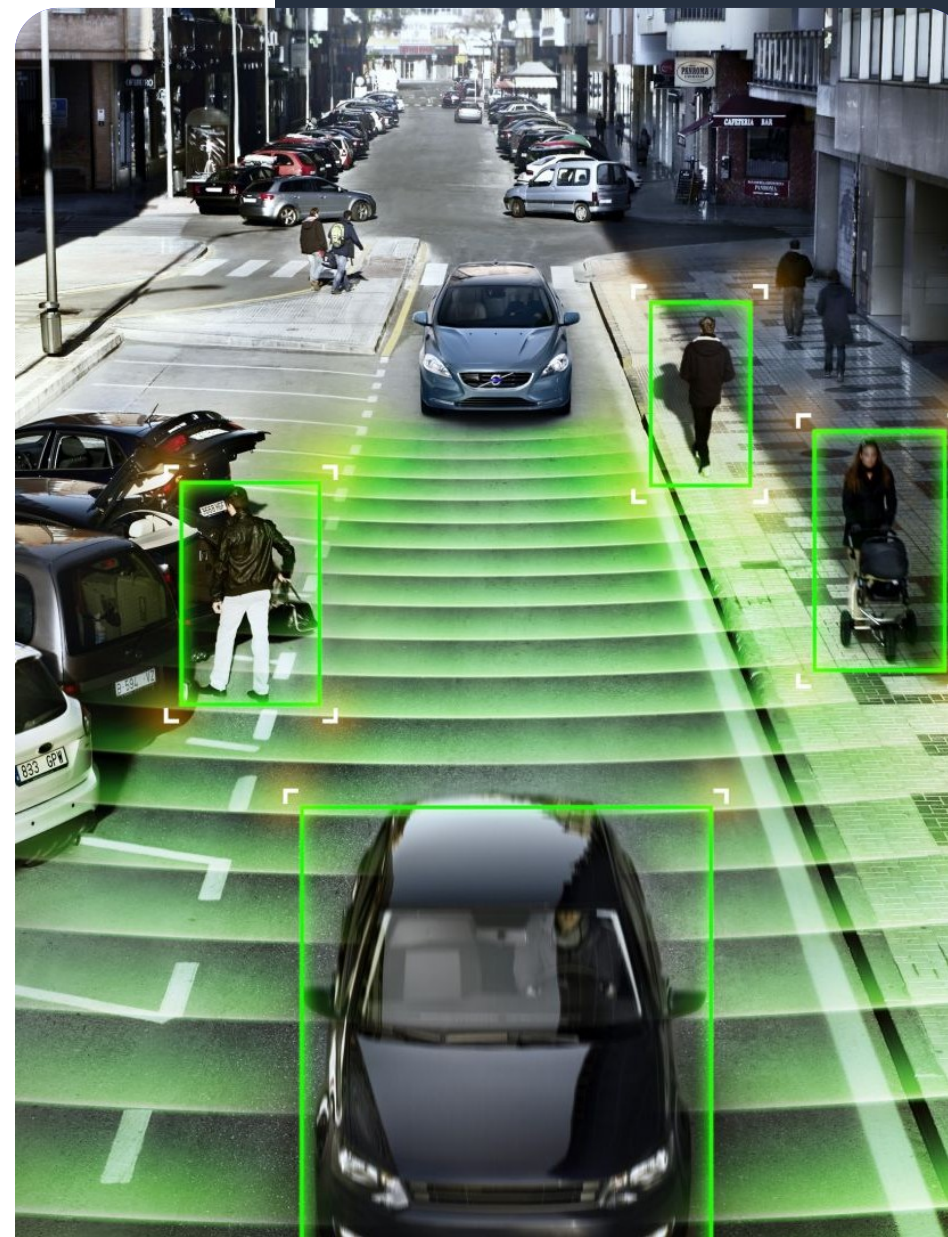


Analytics and Specialized Modules

Neural Network Object Detector

Capabilities

- Object detection and classification: person, vehicle, or animal;
- Movement tracking and theft prevention;
- People detection in the dangerous zone and accidents prevention.



Useful features of the Enterprise Edition for Retail

Centralized management of the retail network. Consolidation of all stores into a single video surveillance system. Enterprise edition allows you to install a video server in each store and unite them into a single domain for centralized control and management.

Centralized Control and Administration

- Management of an unlimited number of video servers within a single system;
- Flexible user role assignment for the entire domain;
- Access control policies, updates, proxying, and logging.

Automatic Equipment Addition

- Fast connection of new recorders to the system - manually or automatically.

Flexible Access Control

- Role-based access control for viewing, archiving, recording, configuration, and other operations;
- Tree-structured object permissions with inheritance: users only see authorized cameras;
- Centralized configuration of the entire domain;
- Brute-force password protection for stronger security.

Notifications and Integration

- Event notifications via Telegram and Email;
- Automatic alerts in case of failures or critical events.

Easy Setup & Updates

- Bulk software/configuration updates across servers;
- Configuration of servers and cameras from client software (no web UI needed).

Status Monitoring and Control

- Centralized monitoring of the network, disks, cameras, archives and databases;
- Flexible reporting on equipment status and user activity with filtration by time, objects and users.

Offline Operation

- Temporary disconnection from the central server does not affect critical operative functions of local servers.

SAGITECH >>



sales@sagitechlab.com
support@sagitechlab.com

www.sagitechlab.com